

# Nanomedicine 2008

Hotel Eden Roc, Sant Feliu de Guixols (Costa Brava) • Spain  
19-24 September 2008

With support from

 Generalitat de Catalunya  
Departament d'Innovació,  
Universitats i Empresa  
**Comissionat per a Universitats  
i Recerca**

The European Science Foundation (ESF) in 2003-2005 undertook a Forward Look on Nanomedicine, defining the current status and future prospects in this new and important emerging field (report published in December 2005, available from [www.esf.org](http://www.esf.org)).

The **2006 Nanomedicine Conference** was the first in a series of biannual in-depth meetings that brought together academic and industrial scientists, regulators and policy makers to foster cross-fertilization in this emerging multi-disciplinary field.

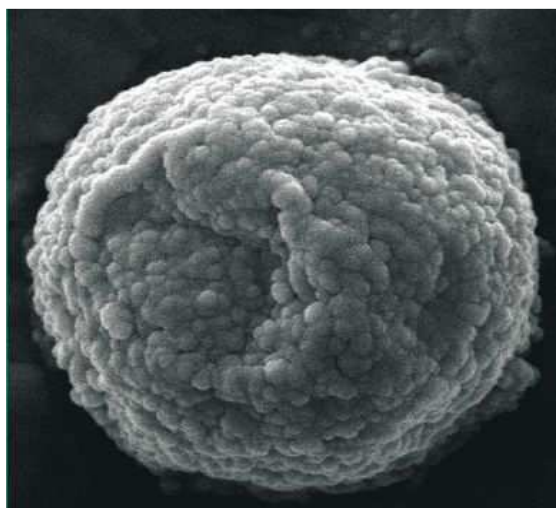
The **2008 Nanomedicine Conference** is the natural evolution of that road bringing together a diversified public in order to integrate converging science in the biomedical applications using nanotechnology. Nanomedicine in its consensus definition established by a broad group of experts within the ESF initiatives brings together different areas that will be reflected on the Conference Sessions covering the following topics:

- Molecular and Patient Imaging
- Regulation of Medicines, Diagnostics & Devices
- Innovation in Materials Science
- Nanotoxicology & Cellular Fate
- Characterisation of Nanostructures & Surfaces
- Nanopharmaceuticals in Research & Development
- Diagnostics, Biosensors & Surgical Tools
- Ethical Issues
- Clinical Applications.

This meeting series has been established to encourage interdisciplinary exchange at the leading edge of all aspects of **nanomedicine research** and its development into clinical practice. Participation is limited to 150 delegates and applications to attend are particularly welcome from academics, clinicians and industrialists working in, or wishing to, enter this new and exciting field. Participation of those interested in the regulation of nanomedicine development and use, and the ethical and societal issues, are also welcome. To ensure lively discussion cross-discipline all delegates and speakers are requested to attend the whole meeting. There will be **no publication of abstracts** to enable exchange of the very latest data.

The plenary and main lecture sessions will be held in the mornings and evenings. This will leave afternoons free for **networking and poster sessions**.

**A certain number of grants (covering the conference fee and possibly part of the travel costs) will be available for early career researchers (PhD students, postdoctoral scientists or first appointment staff).**



© Schering AG

**Chair:** Rogério Gaspar, University of Lisboa, PT

**Co-Chairs:** Hans Oberleithner, Muenster Univ., DE, Mauro Giacca, ICGEB, IT, Thomas Kissel, Marburg Univ., DE, Vicki Stone, Napier Univ., UK

## Invited Speakers will include

Mário Barbosa, INEB, PT  
Paul Dietl, University of Ulm, DE  
Yves Dufrene, U. Catholique de Louvain, BE  
Ruth Duncan, Centre for Polymer Therapeutics, Cardiff U., UK  
Mike Eaton, UCB, UK  
Paulo Freitas, INESC-MN, PT  
Alberto Gabizon, University Jerusalem, IL  
Mauro Giacca, ICGEB, IT  
Robert Henderson, Univ. Cambridge, UK  
Goran Hermeren, Lund University, SE  
Peter Hinterdorfer, Johannes Kepler U., AT  
Hans Hofstra, Philips Medical Systems, NL  
Tony Huang, Alza Corp, US  
Alexander Kabanov, Nebraska U. Med. Centre, US  
Jørgen Kjems, iNano, DK  
Wolfgang Kreyling, GSF, Munich, DE

Reinhard Lipowsky, Max-Planck Institut, DE  
Steffen Loft, Institute of Public Health, DK  
Gabriel Lopez-Berenstein, Texas Medical Centre, US  
M. Pilar Marco, CSIC, ES  
Philip Martin, European Commission, BE  
Andrew McCaskie, University Newcastle, UK  
Hans Oberleithner, Muenster University, DE  
Fernando Palacio, University Zaragoza, ES  
Alan E. Rowan, Radboud Univ. Nijmegen, NL  
Nakissa Sadrieh, CDER-FDA, US  
Ferran Sanz, Pompeu Fabra U., IMPMIM, ES  
Simon Scheuring, Institut Curie, CNRS, FR  
Molly Stevens, Imperial College, UK  
Larry Tamarkin, CytImmune, US  
Viola Vogel, ETH Zurich, CH  
Janos Vörös, ETH Zurich, CH  
Ernst Wagner, University of Munich, DE

**Application Form & Programme** available from

**[www.esf.org/conferences/08218](http://www.esf.org/conferences/08218)**

**Closing Date for Application 23 May 2008**

European Science Foundation | Research Conferences Unit  
149 avenue Louise | Box 14 | Tour Generali, 15th Floor | Brussels | Belgium  
Tel: + 32 (0)2 533 2020 | Fax: +32 (0)2 538 8486  
Email: [conferences@esf.org](mailto:conferences@esf.org) | [www.esf.org/conferences](http://www.esf.org/conferences)