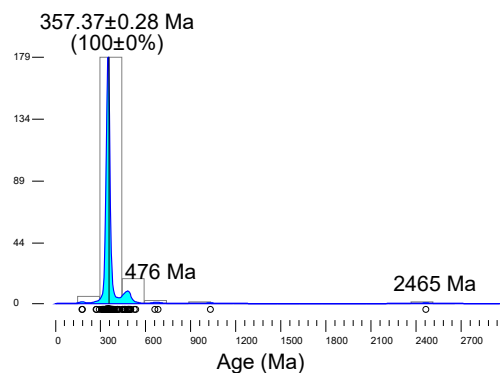
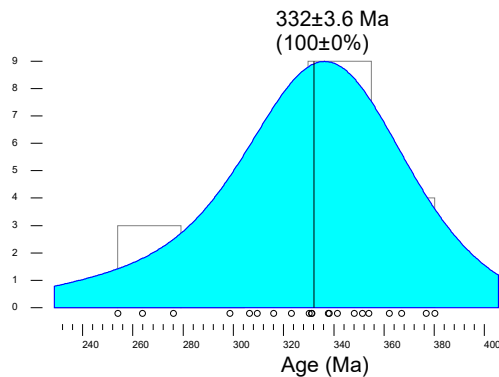


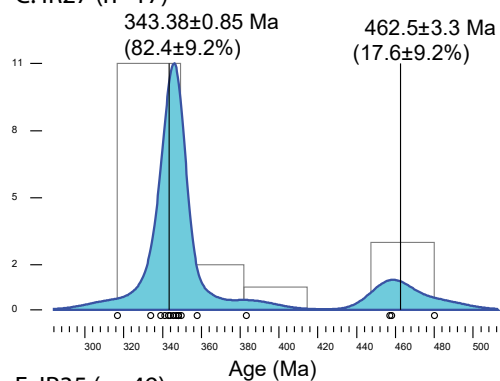
A. KDE zircon ages (all, n=206)



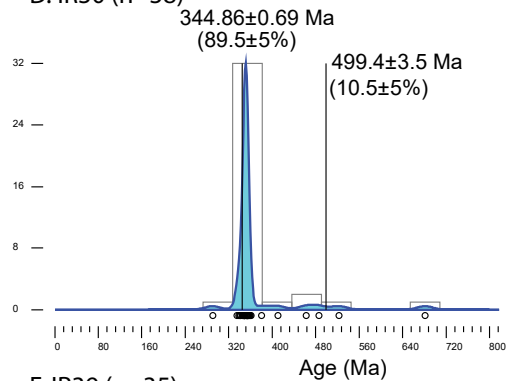
B. KDE monazite ages (all, n=21)



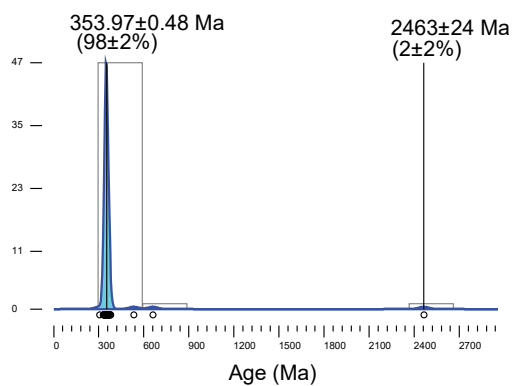
C. IR27 (n=17)



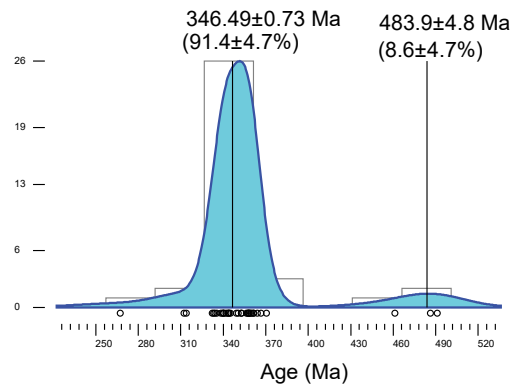
D. IR30 (n=38)



E. IR35 (n=49)



F. IR39 (n=35)



G. IR41 (n=36)

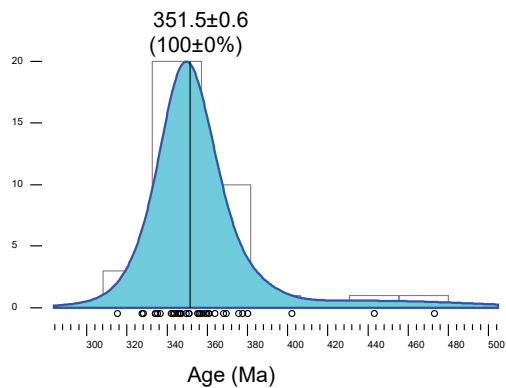


Figure S2. KDE ages (A) LA-ICP-MS zircon ages from all samples, (B) all SIMS monazite ages, and LA-ICP-MS zircon ages from samples (C) IR27, (D) IR30, (E) IR35, (F) IR39, and (G) IR41. In each plot, the number of grains analyzed is included (n=#) and the age of the peak is indicated and an estimate of the % of the zircons that comprise that peak.