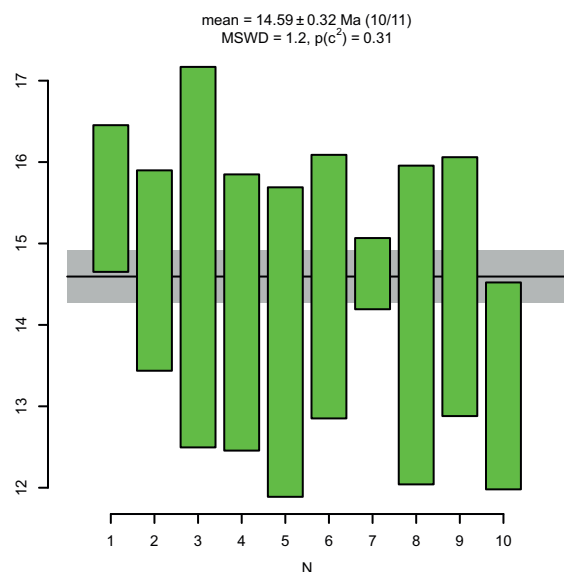
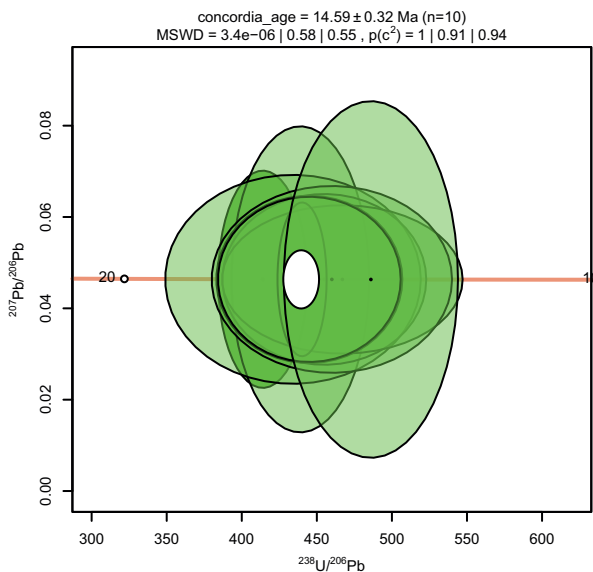
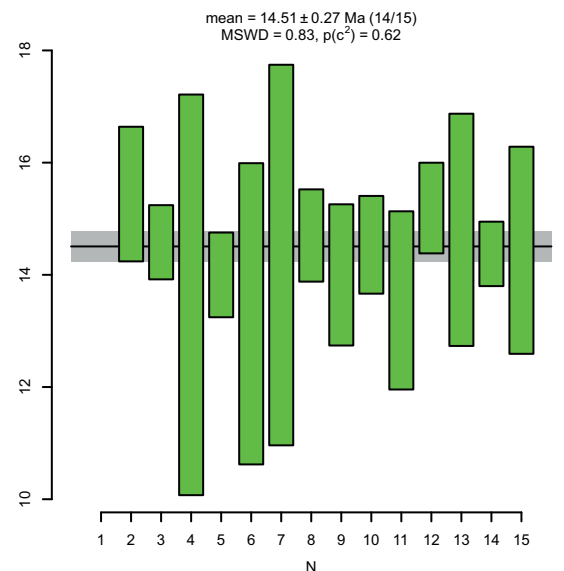
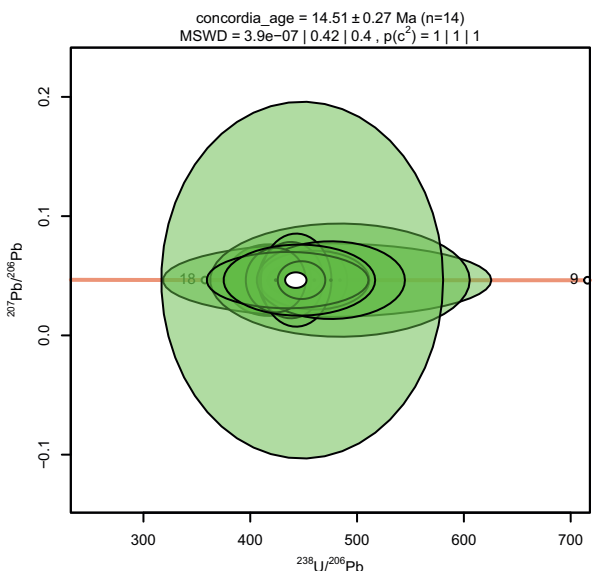


Electronic supplement 4/1: Concordia and weighted means plots

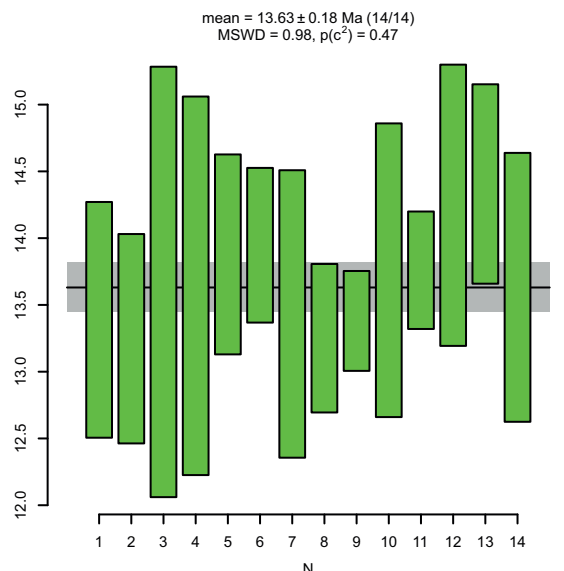
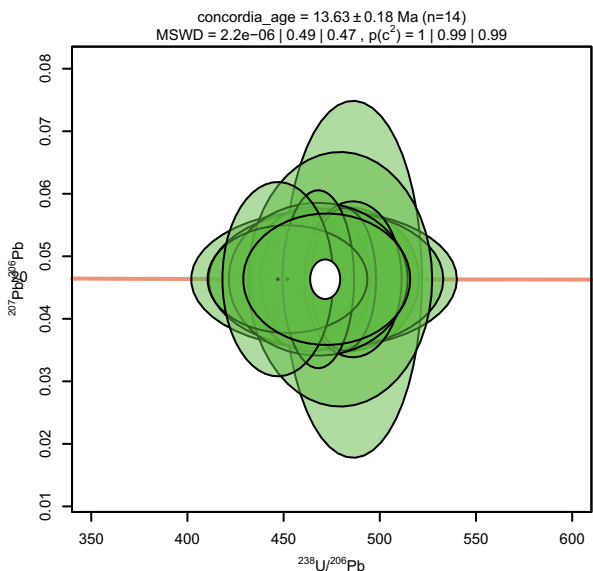
BLJ-1



BLJ-3

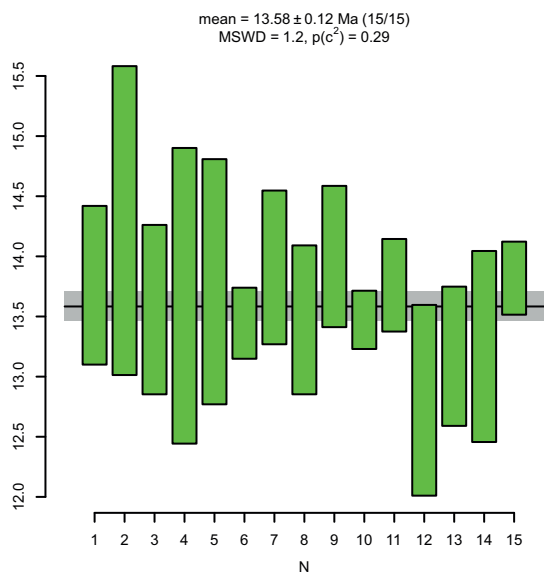
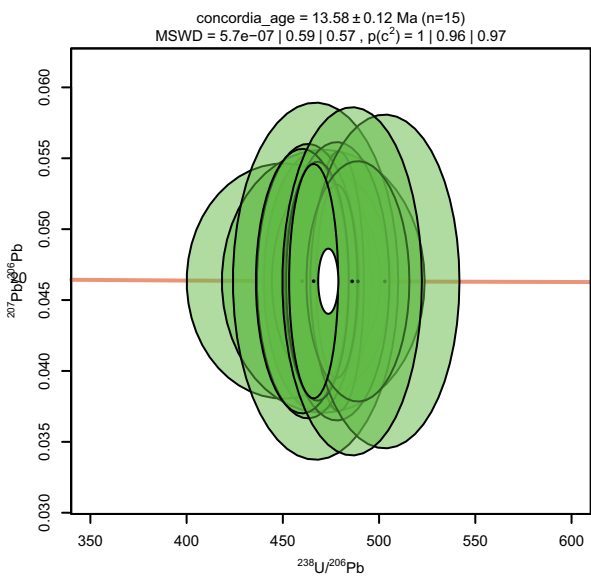


RB-463

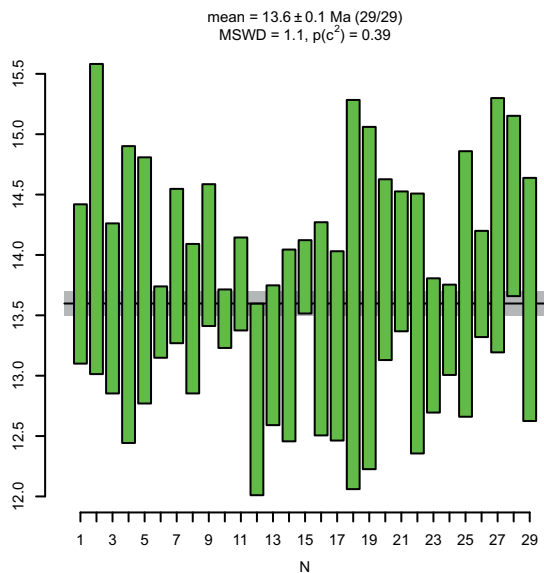
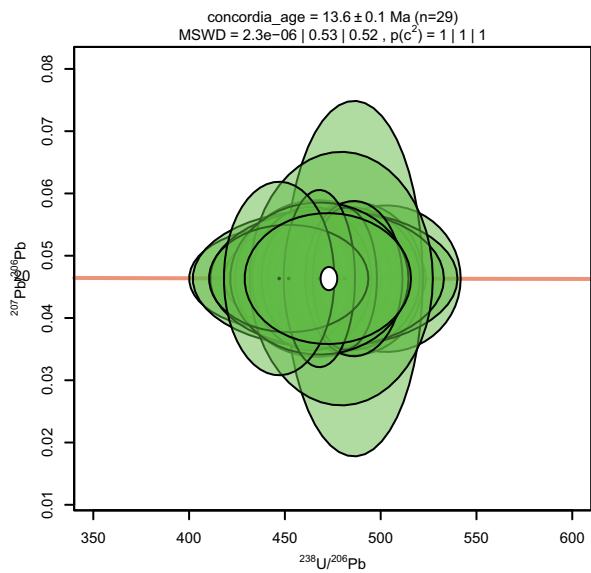


Electronic supplement 4/2: Concordia and weighted means plots

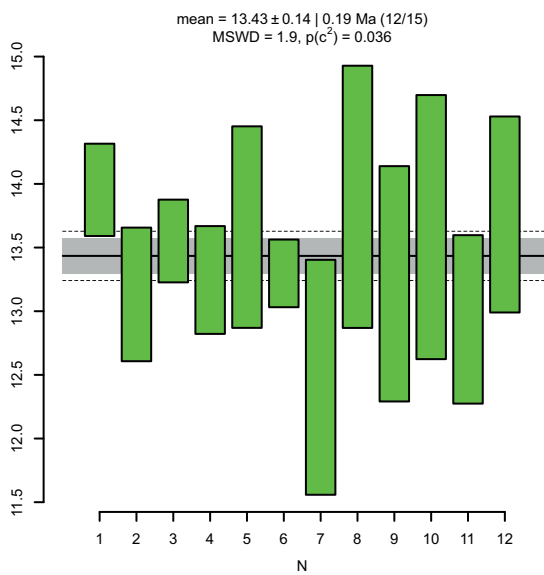
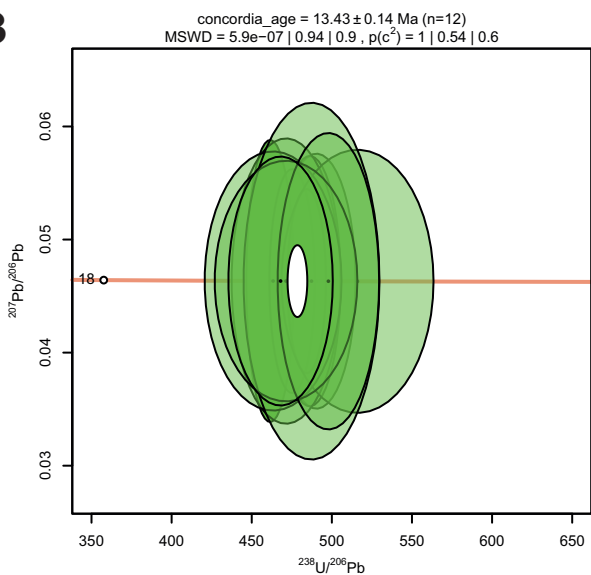
RB-350



RB-463  
+  
RB-350

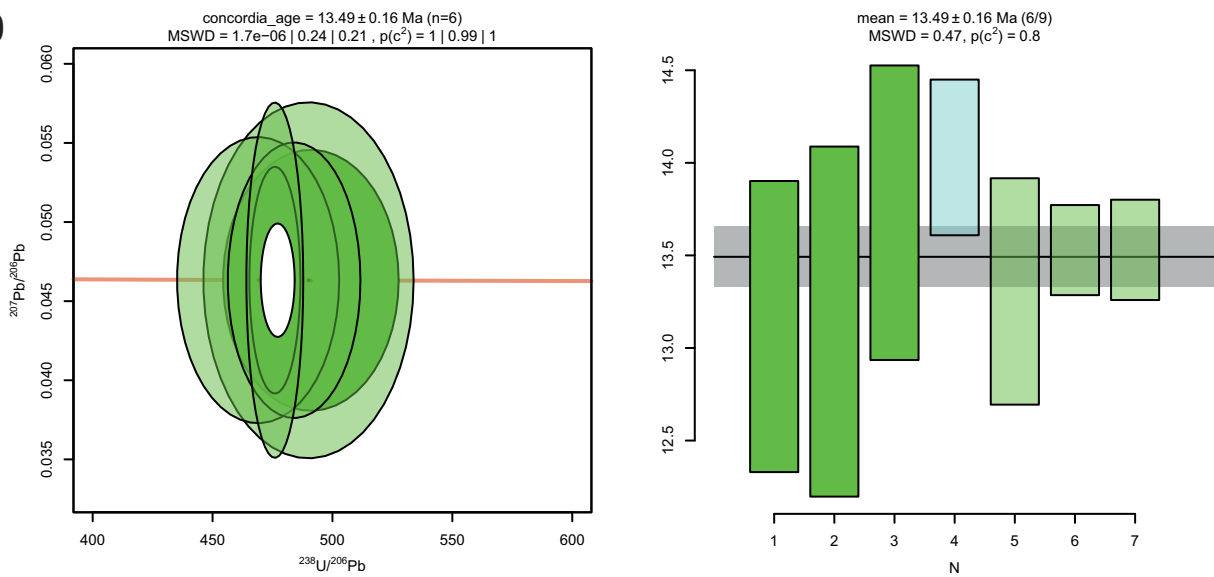


RB-1073

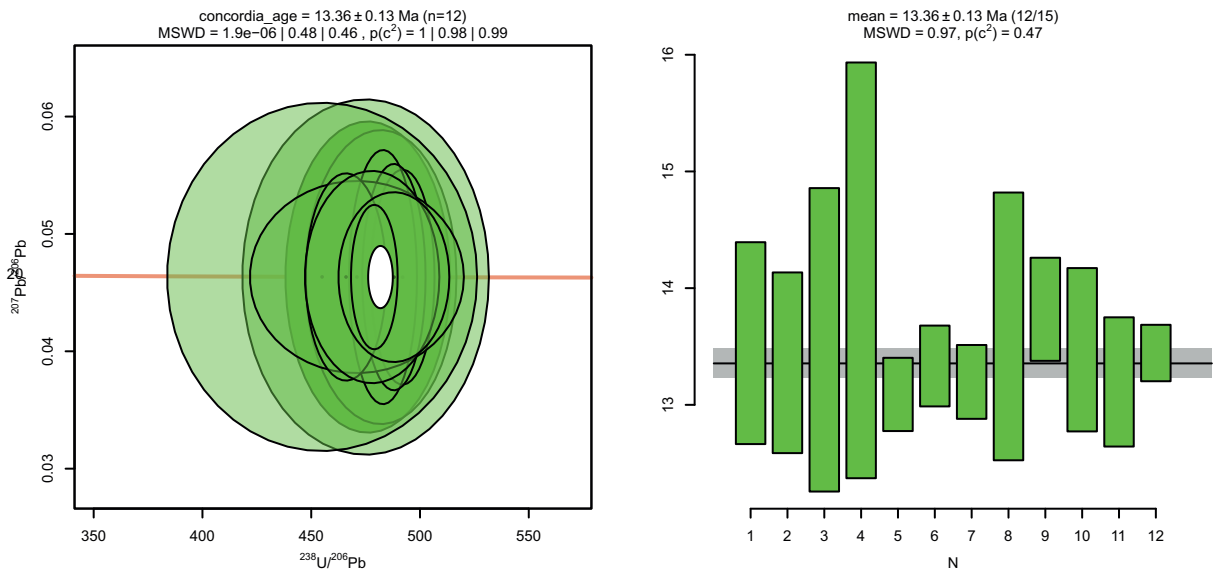


Electronic supplement 4/3: Concordia and weighted means plots

RB-1149

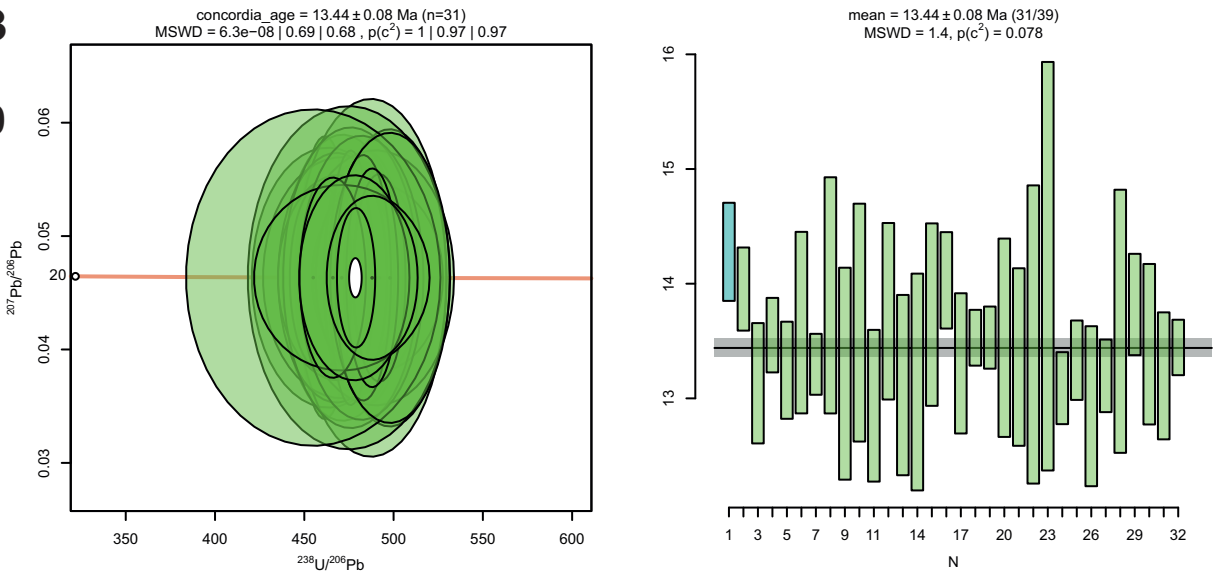


GD-1



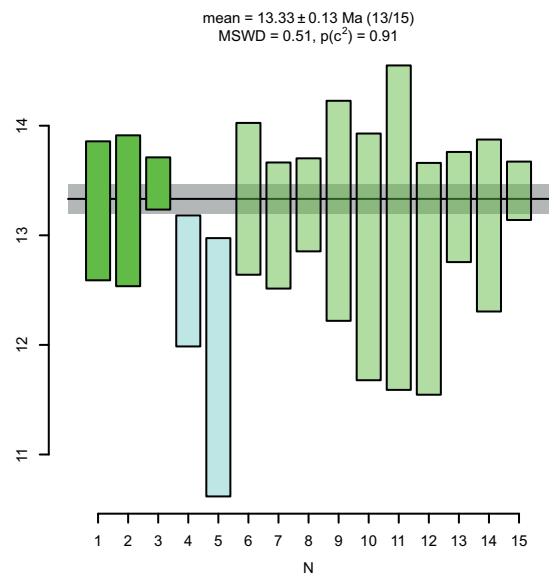
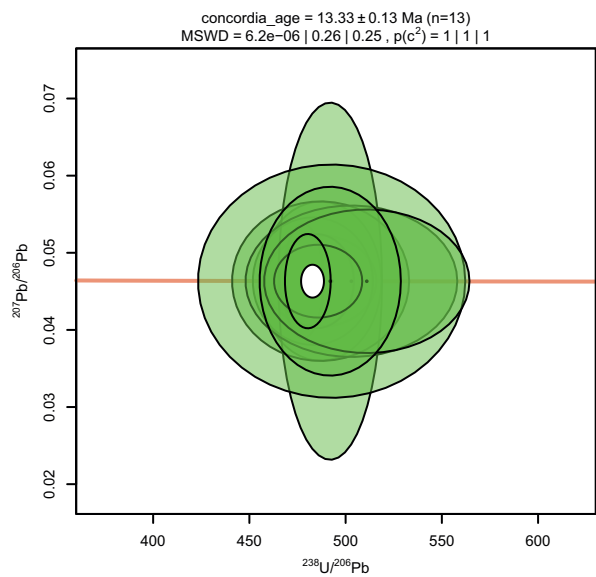
RB-1073

+  
RB-1149  
+  
GD-1

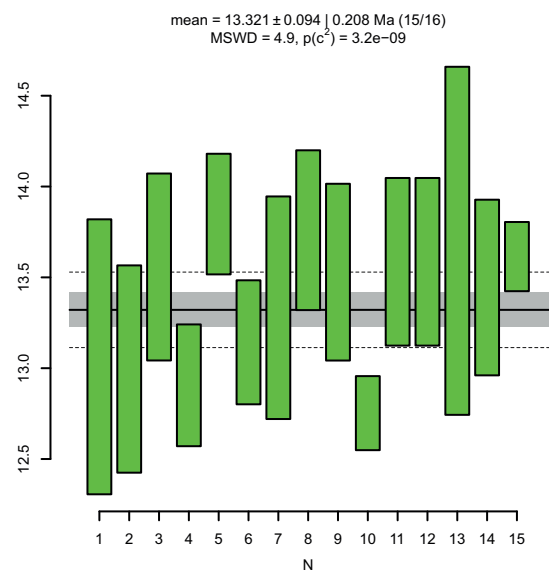
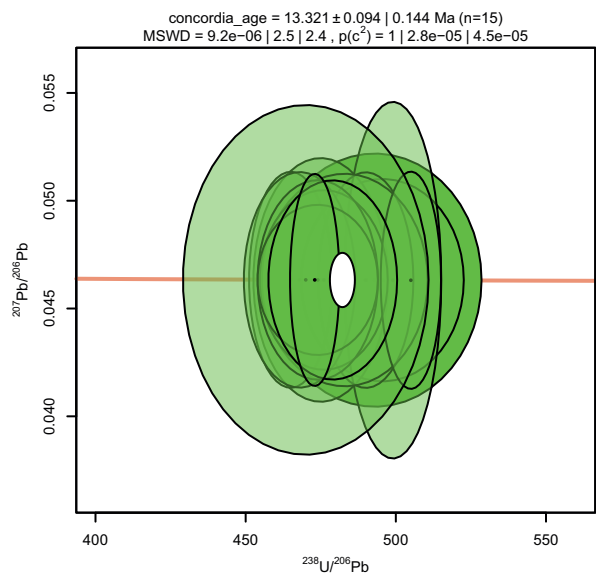


Electronic supplement 4/4: Concordia and weighted means plots

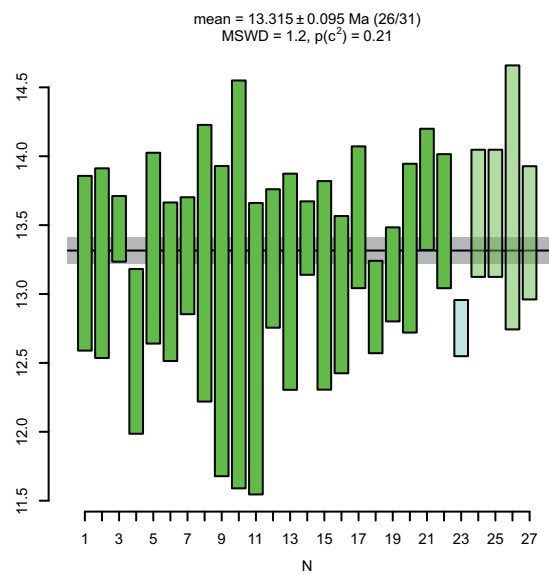
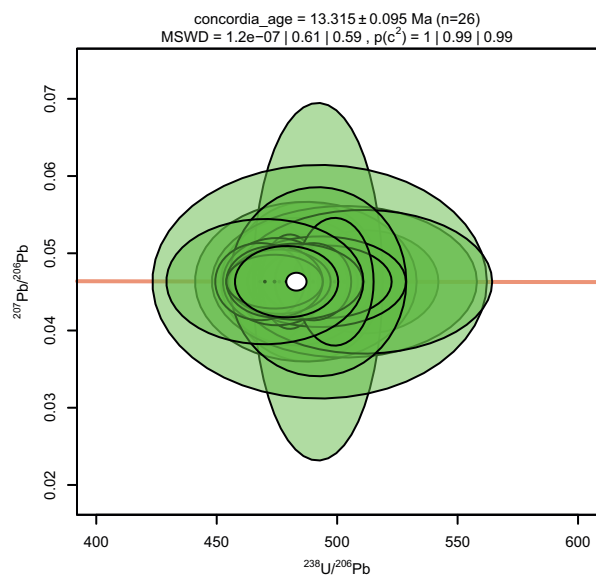
RB-462



RB-349

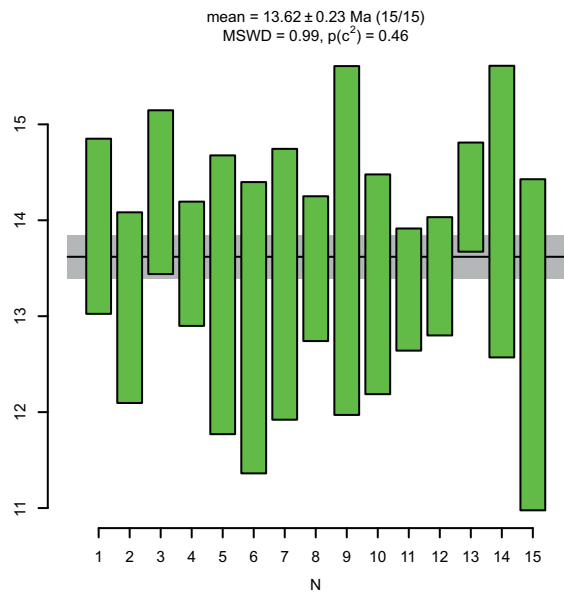
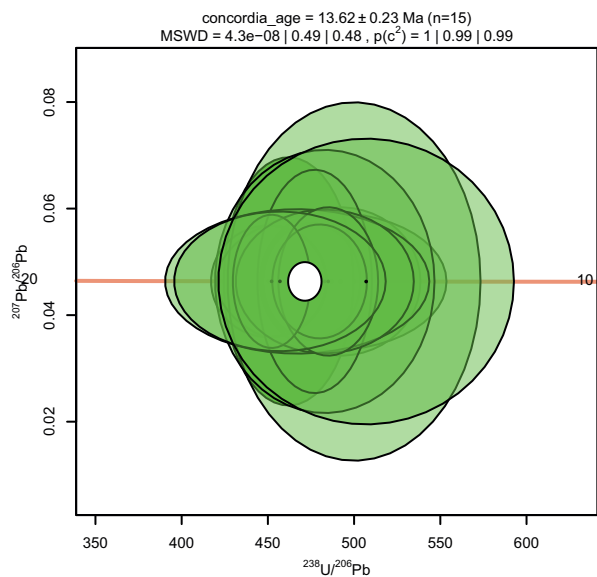


RB-462  
+  
RB-349

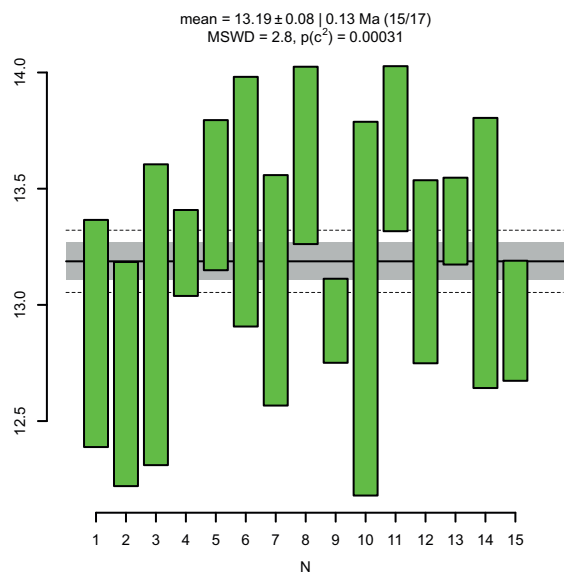
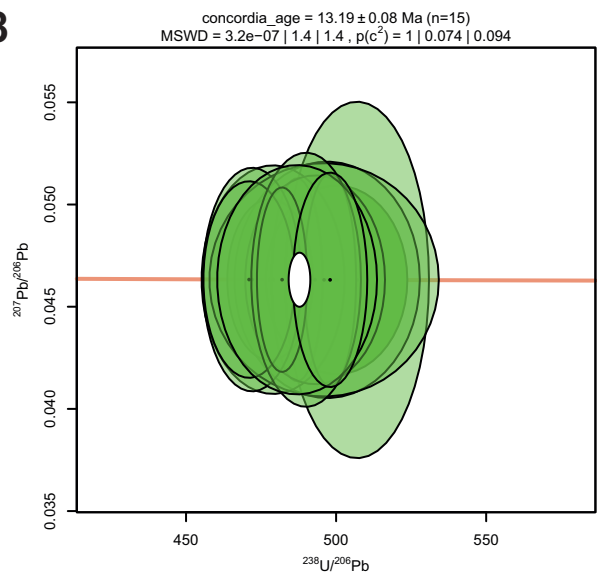


Electronic supplement 4/5: Concordia and weighted means plots

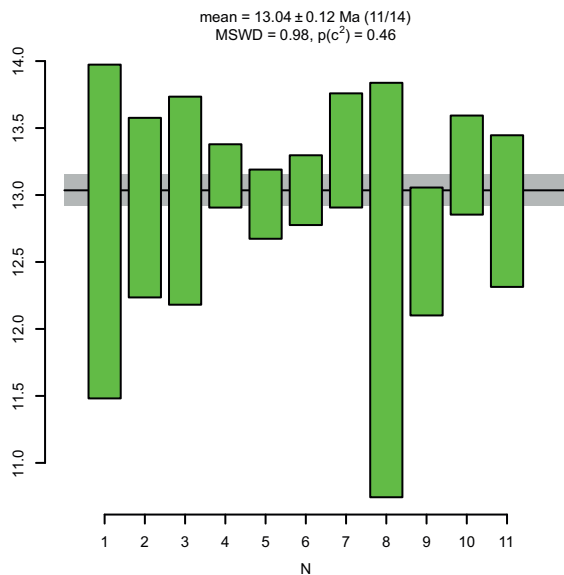
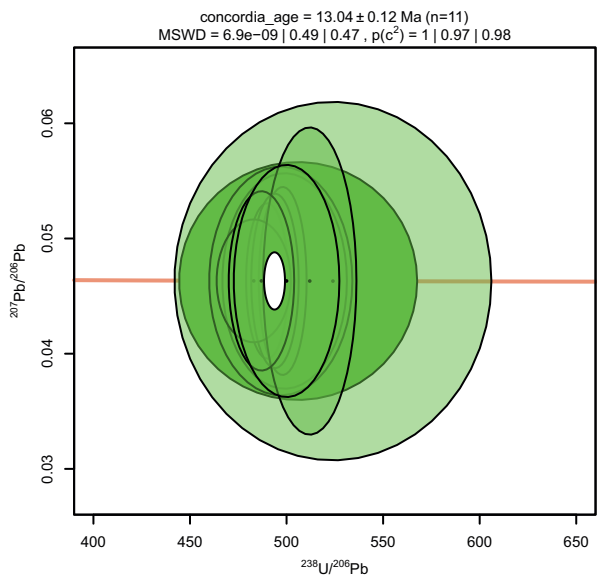
KDP-1



RB-1148

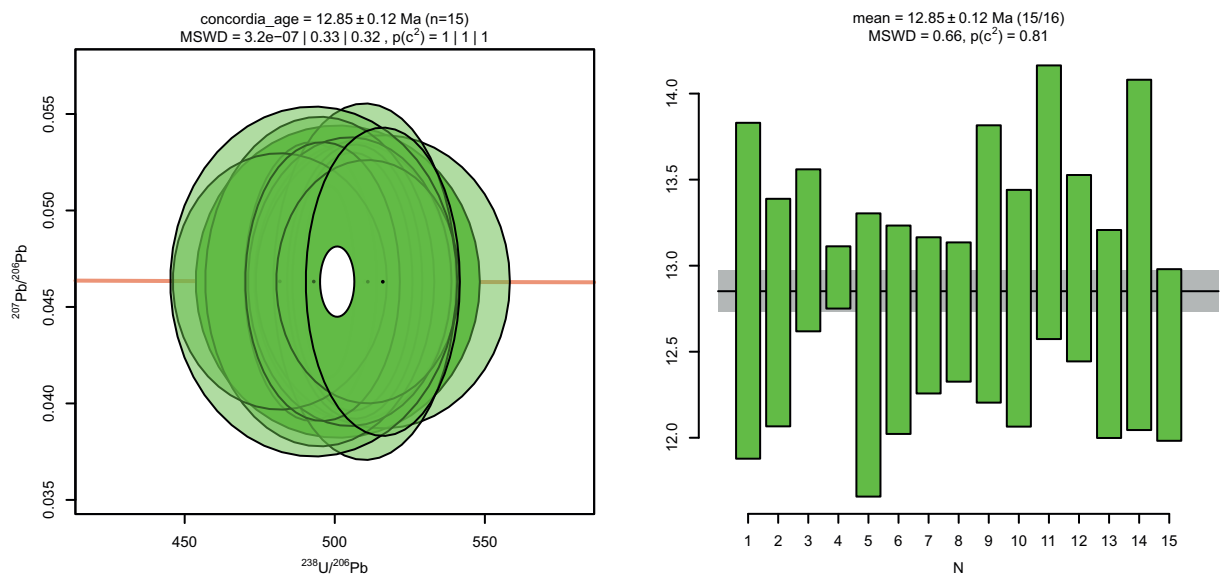


KDP-3

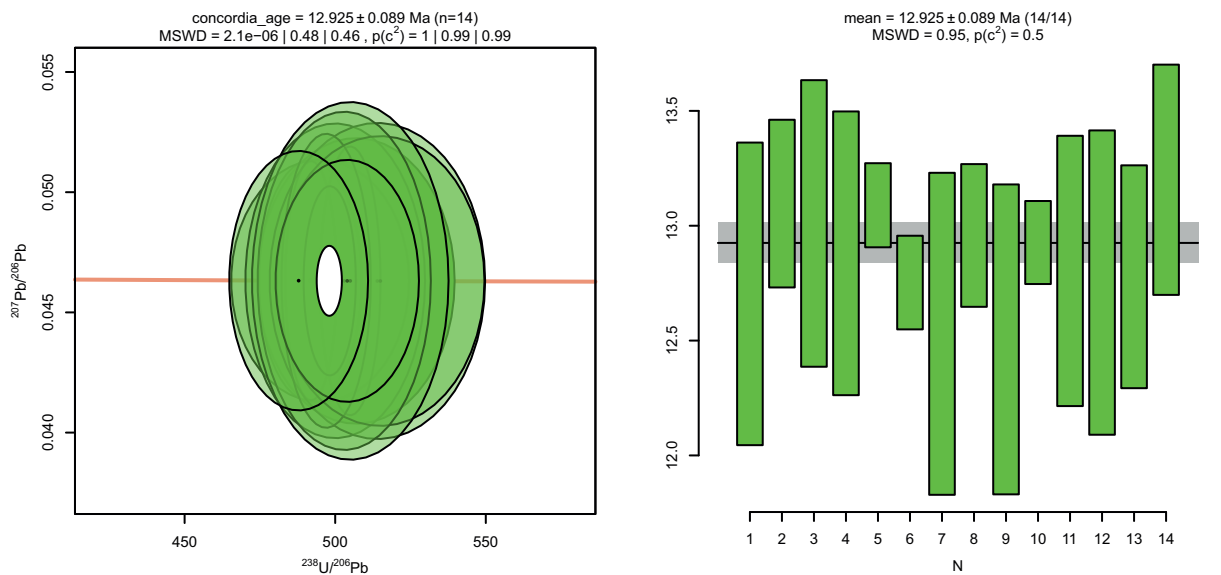


Electronic supplement 4/6: Concordia and weighted means plots

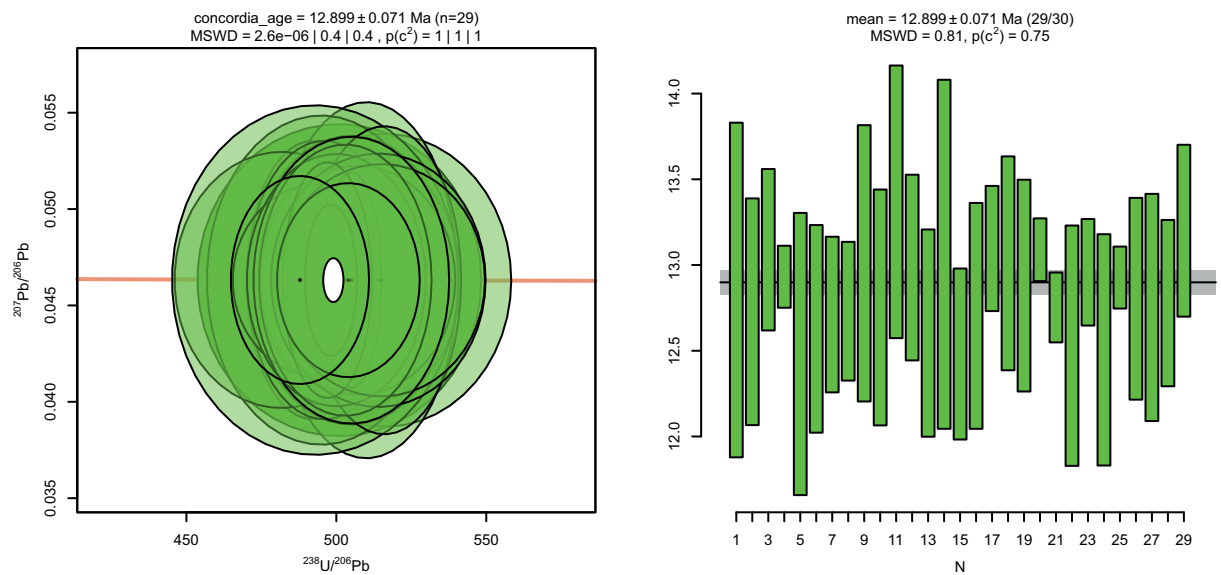
R-8



R-12

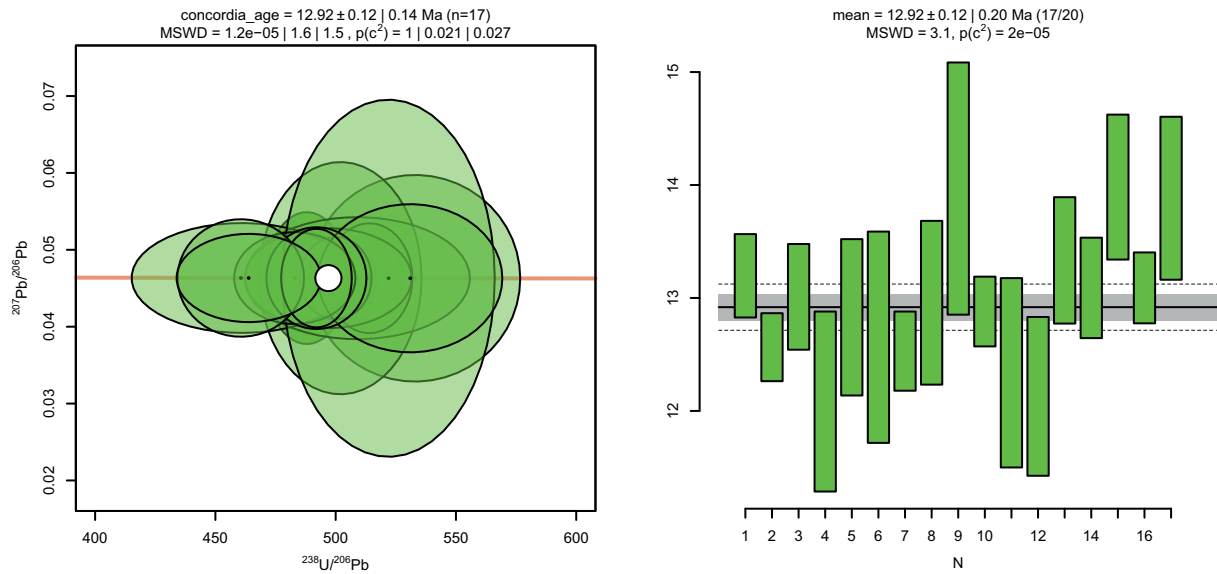


R-8  
+  
R-12

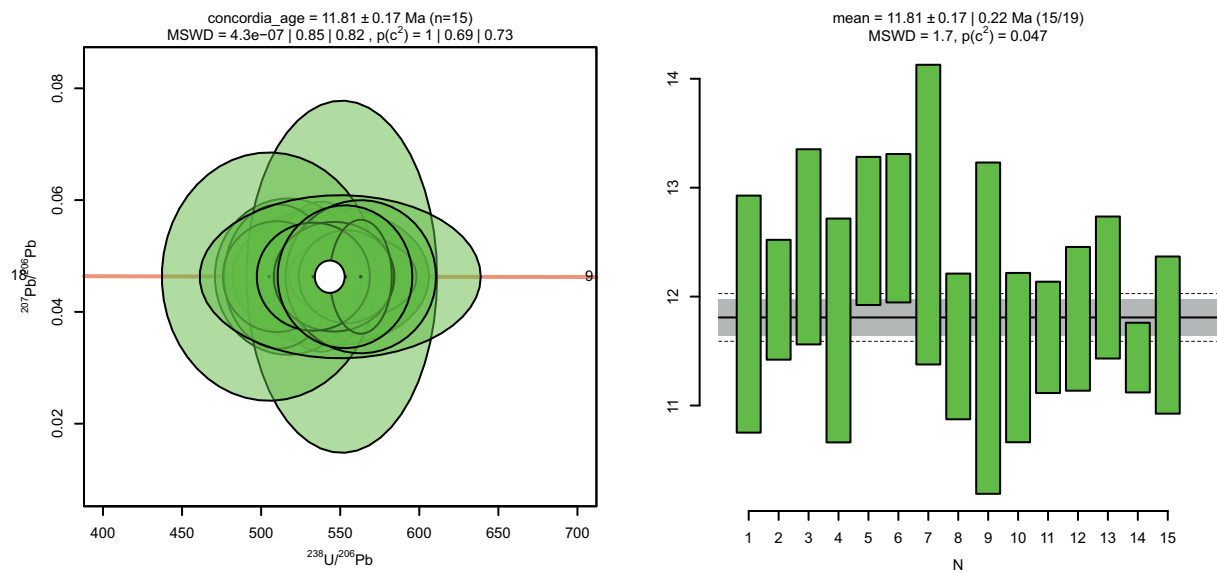


Electronic supplement 4/7: Concordia and weighted means plots

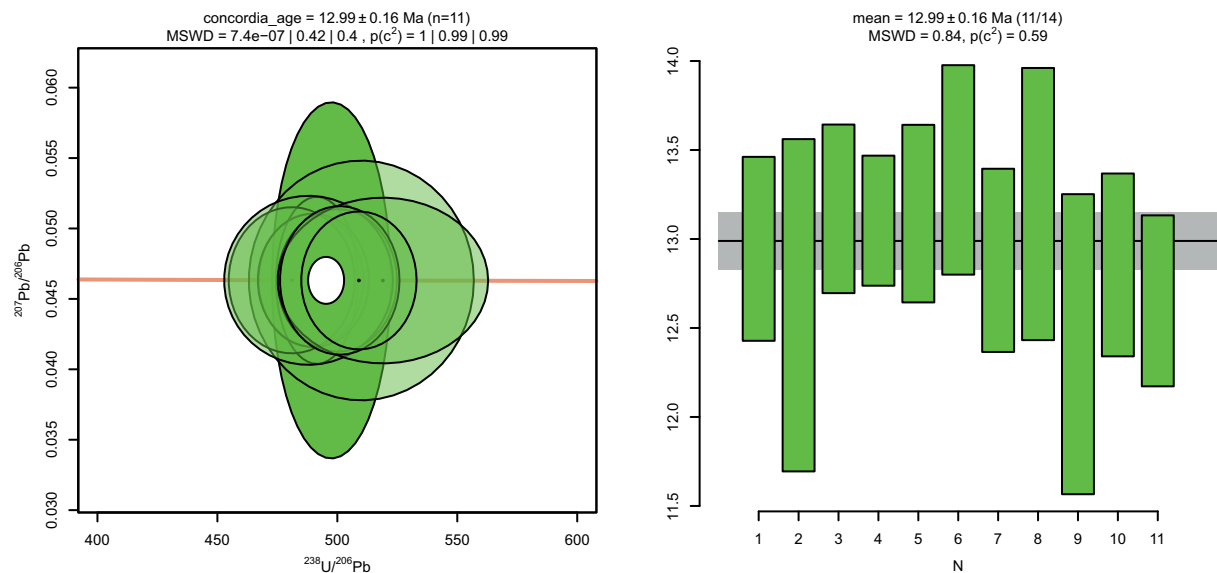
SEM



TI-5

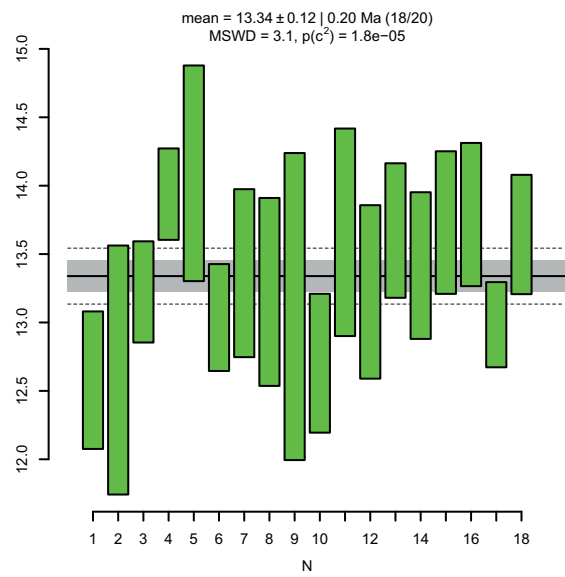
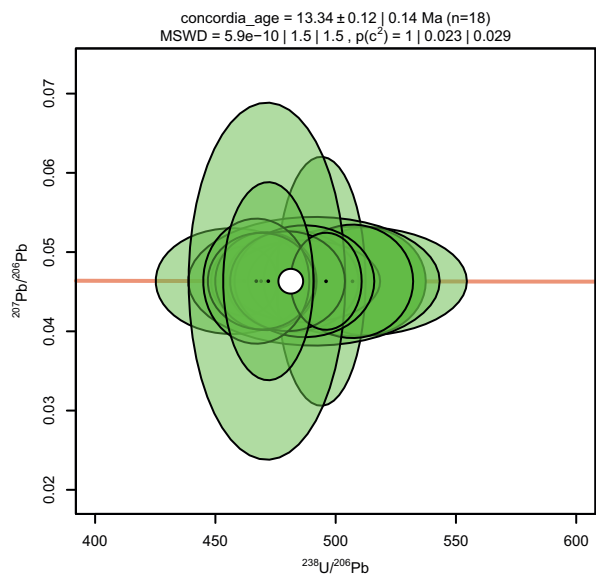


ST-102

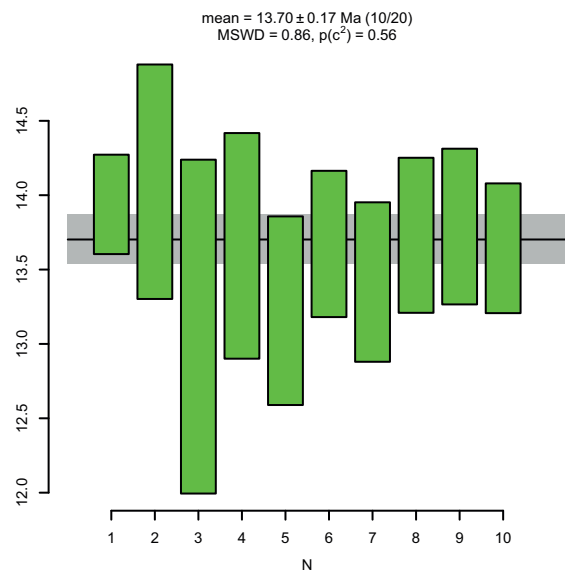
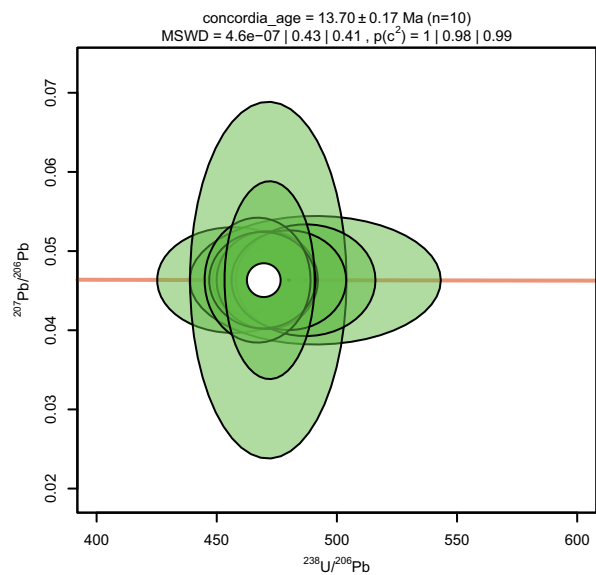


Electronic supplement 4/8: Concordia and weighted means plots

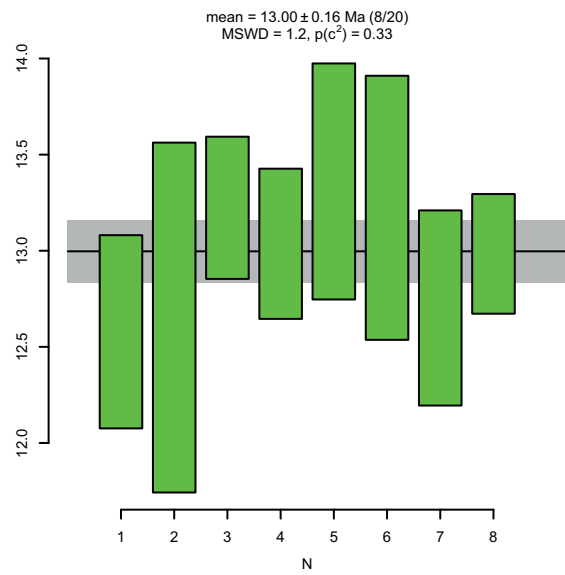
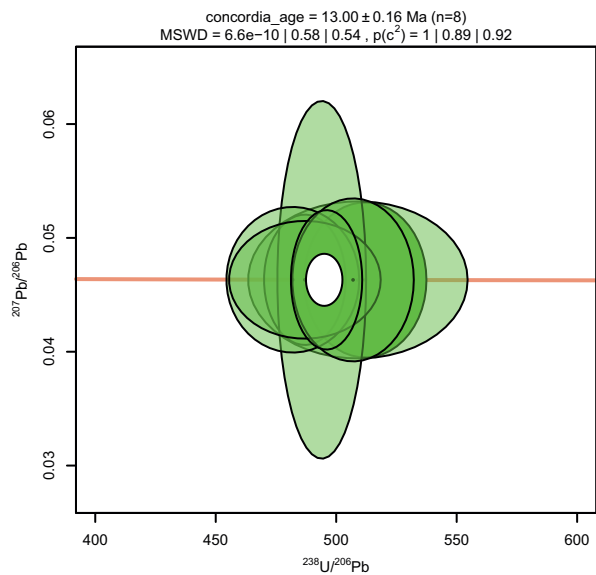
ST-104



ST-104  
old



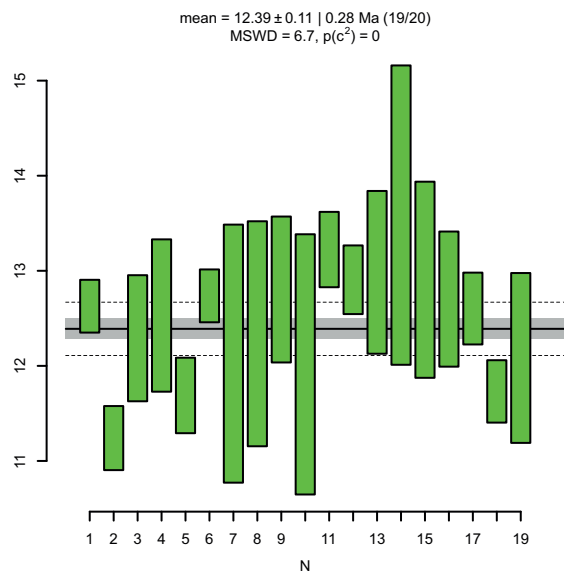
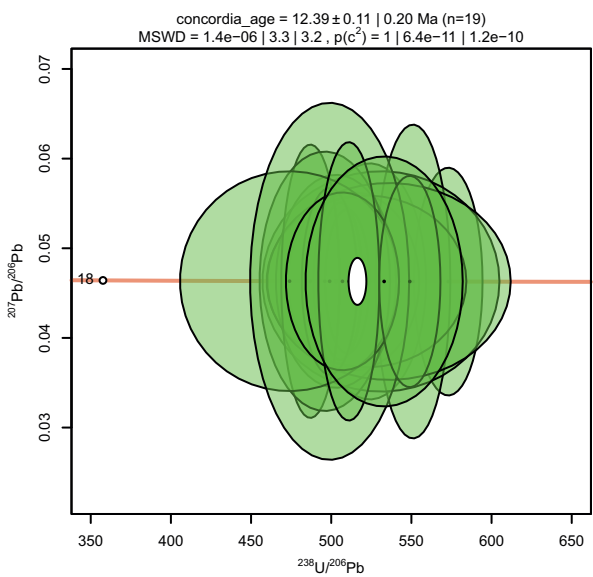
ST-104  
young



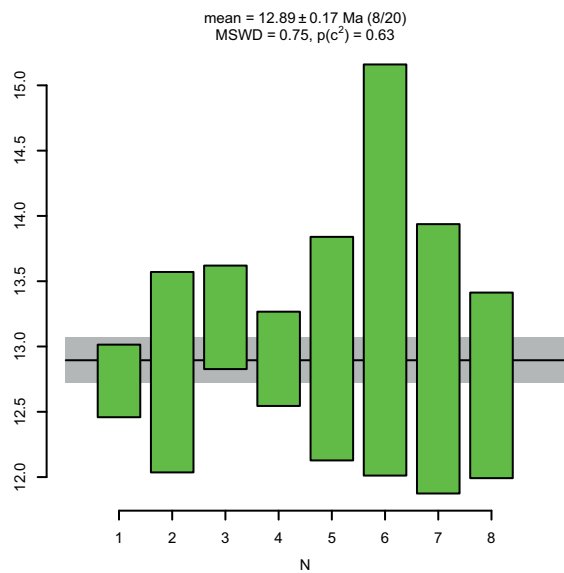
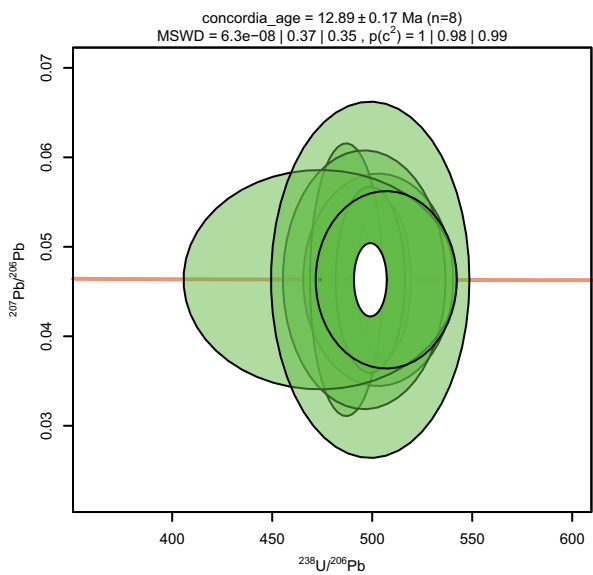


Electronic supplement 4/9: Concordia and weighted means plots

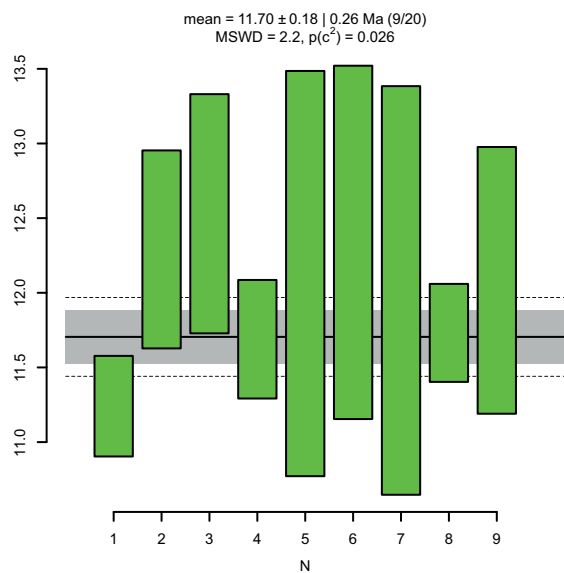
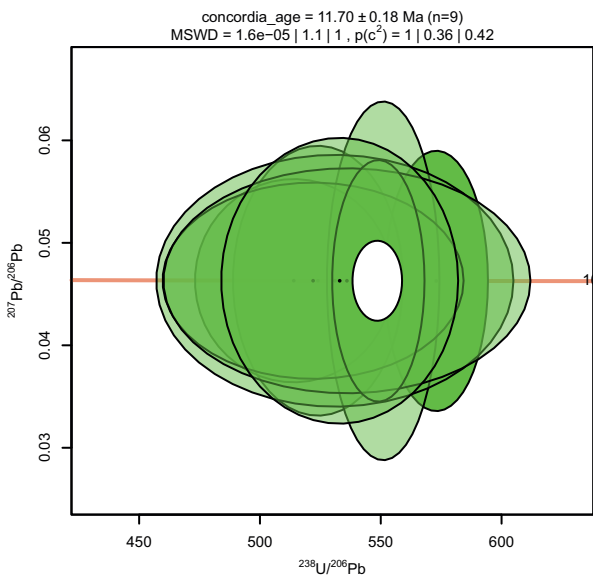
ST-105



ST-105  
old

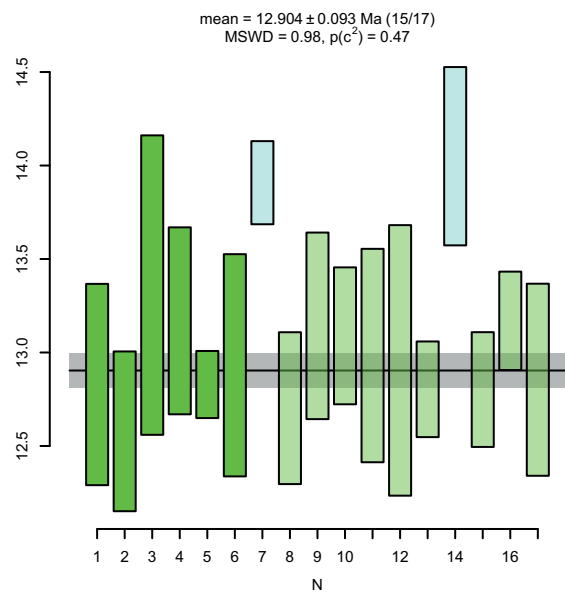
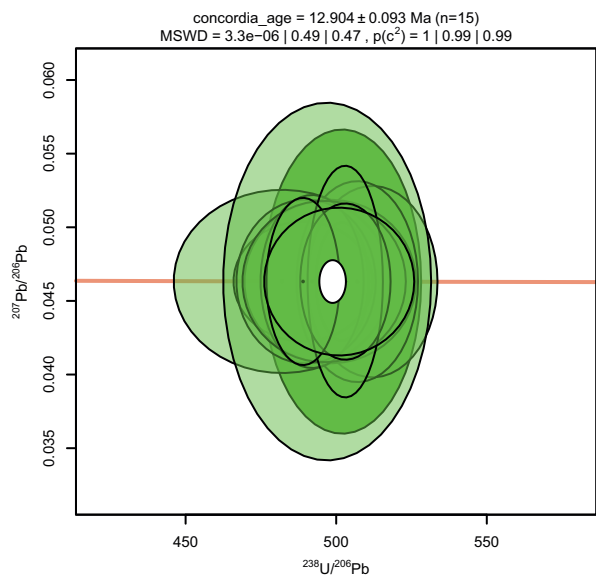


ST-105  
young

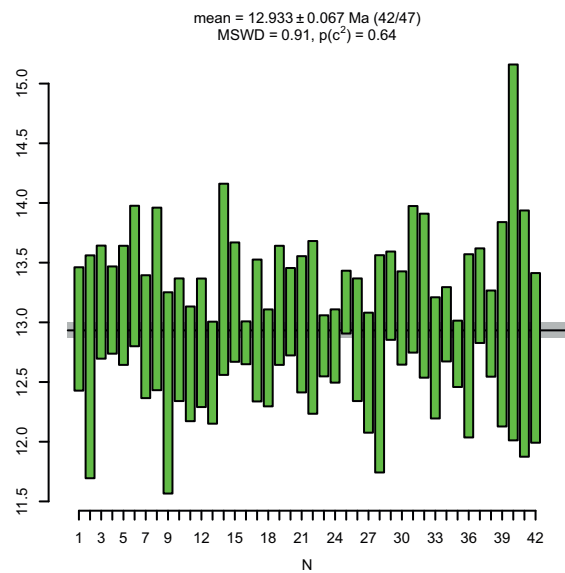
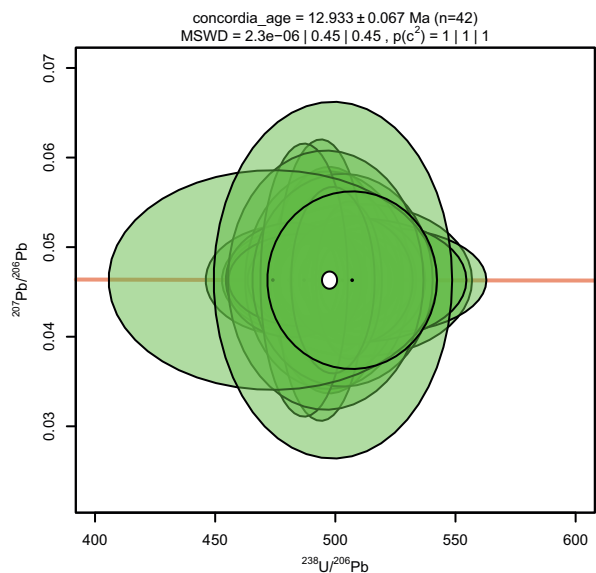


Electronic supplement 4/10: Concordia and weighted means plots

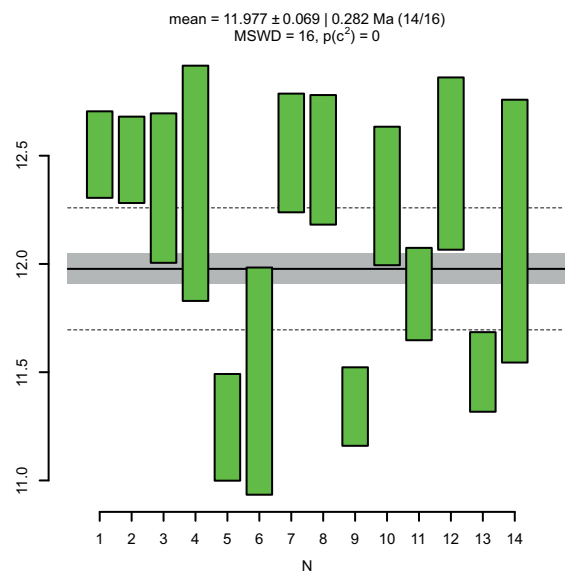
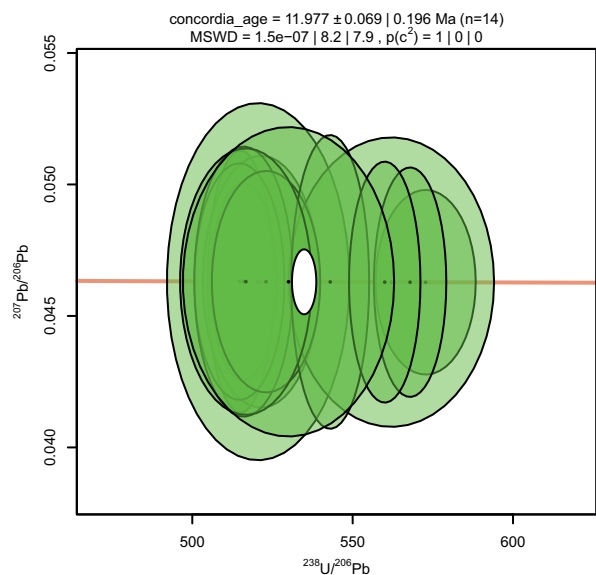
ST-107



ST-102  
+  
ST-104  
young  
+  
ST-105  
old  
+  
ST-107

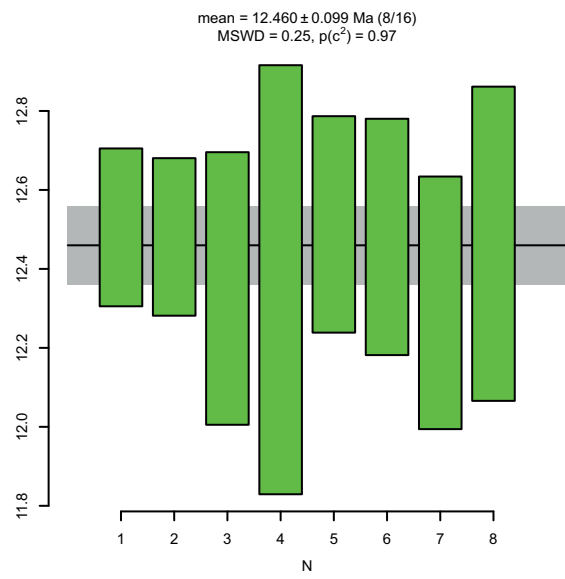
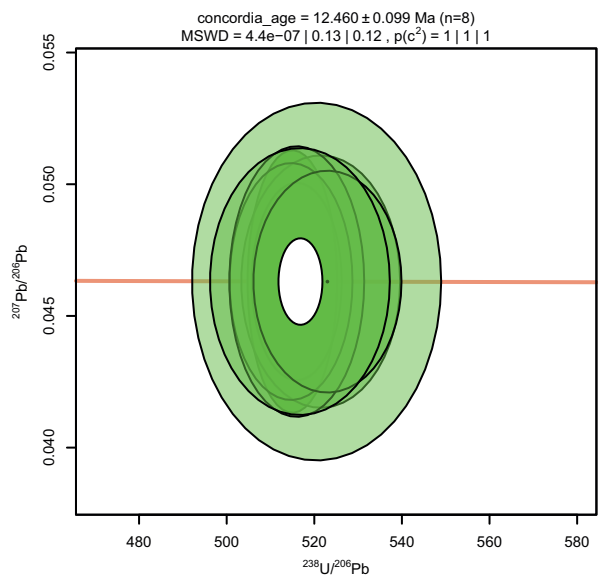


R-1



Electronic supplement 4/11: Concordia and weighted means plots

R-1  
old



R-1  
young

