

NEW SITES FROM THE SCYTHIAN PERIOD ON THE RIGHT BANK OF THE DANUBE¹

DATA TO THE CONNECTIONS OF THE VEKERZUG AND HALLSTATT CULTURES FROM THE TERRITORY OF BUDAPEST

Farkas Márton Tóth

DOI: <https://doi.org/10.31577/szausav.2019.suppl.1.29>

Keywords: Hallstatt culture, Vekerzug culture, Transdanubia, Scythian Period, Middle Iron Age, burial, connections

New sites from the Scythian Period on the right bank of the Danube : Data to the connections of the Vekerzug and Hallstatt cultures from the territory of Budapest

During the past decade two new Middle Iron Age sites were discovered in the Danube's right bank area in Budapest. Both Békásmegyer-Északi városkapu and Nagytétény-Tétényliget are only partially excavated; their material can be dated roughly to the Ha D phase, i.e. to the 6th–5th centuries BC, approximately. Despite being located on the eastern periphery of the Transdanubian Hallstatt culture's distribution area, the main characteristics of their archaeological record link them with the Scythian Period populations of the Great Hungarian Plain and the Pest Plain in the first place. This is a well known and well-studied phenomenon: Scythian type finds frequently appear in Transdanubian sites, especially in the Danube elbow area. Currently 19 sites, dated to the Early and Middle Iron Ages, are known from the territory of Budapest. The inhabitation of the eastern, Pest side is of homogenous Scythian character, while on the western, Buda side the settlements of the Hallstatt culture and the sites – mainly burials or cemeteries – of the Vekerzug culture appear side by side.

INTRODUCTION

During the Middle Iron Age the larger area of today's Budapest was part of an interference zone of two major archaeological complexes, both of which fundamentally determined Europe's cultural relations at the time. People of the Vekerzug culture (of mixed origin, embracing both local and eastern components, representing Scythian elements) encountered here with communities of the Transdanubian Hallstatt culture (of overwhelmingly Central European roots and connections). Therefore, this is an ideal area to study this lasting interaction – provided, suitable sites are available. In this respect, the discovery and partial excavation of two new sites on the western, Buda side of the Hungarian capital during the past decade meant a major step forward. In the followings the results of these excavations are presented to add to the current picture on the connections between the Vekerzug and Hallstatt cultures in the region as well as in the whole Carpathian Basin.

THE SITES

Békásmegyer-Északi városkapu (Northern City Gate) is located in the 3rd district of Budapest, in a distance of about 500–900 m from the right bank of the Danube (Fig. 1: 1). In 2008 a testing was conducted on the site by Orsolya Láng, as a result of which four Middle Iron Age phenomena became discovered (Láng 2009).

Nagytétény-Tétényliget is located in the 22nd district of Budapest, in a distance of about 600–700 m from the right bank of the Danube (Fig. 1: 2). During March 2012 preliminary excavations were carried

¹ I am grateful to Katalin Sebők for the English translation of the manuscript.

out here, led by József Beszédes, preceding the reconstruction of the Budapest–Tárnok railway line. Altogether three Middle Iron Age phenomena were unearthed (Beszédes *et al.* 2013).

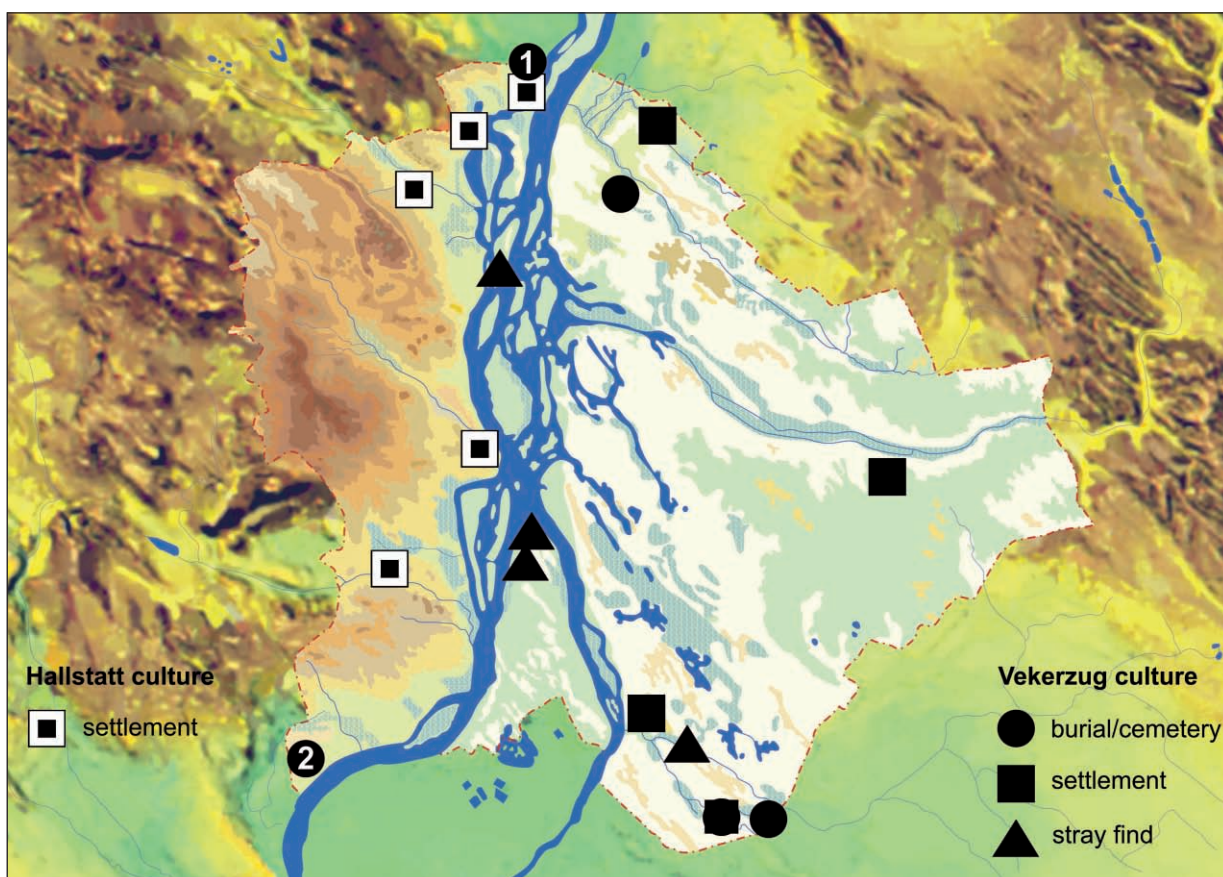


Fig. 1. Middle Iron Age sites in the territory of Budapest. 1 – Békásmegyér-Északi városkapu; 2 – Nagytétény-Tétényliget.

The two sites show a number of similarities regarding not only their geographical and cultural positions, but also the character of their archaeological record. As the Middle Iron Age burials unearthed in the two sites show very little variation in basic funerary rite, characteristics of the grave pits, or typological composition of the grave good sets, their joint presentation seems logical.² Several other phenomena with uncertain dating, some of which might also belong to the Middle Iron Age horizon, were left out from the processing. The anthropological processing of the cremated human remains was not carried out up to date, thus the sex and age at death of the deceased is not determined.

THE RESULTS OF THE EXCAVATIONS

Budapest, District 3

Békásmegyér-Északi városkapu/Northern City Gate

Located between the Barát creek – Ország str. – Hadrianus str. – Királyok str., Parcel Number 65554/27–28–29. Archaeological periods: Early Bronze Age (settlement phenomena with poorish finding material), Middle Iron Age (four scattered cremation burials).

² I am indebted to Orsolya Láng and József Beszédes for their permission to process and publish the Iron Age materials of their sites.

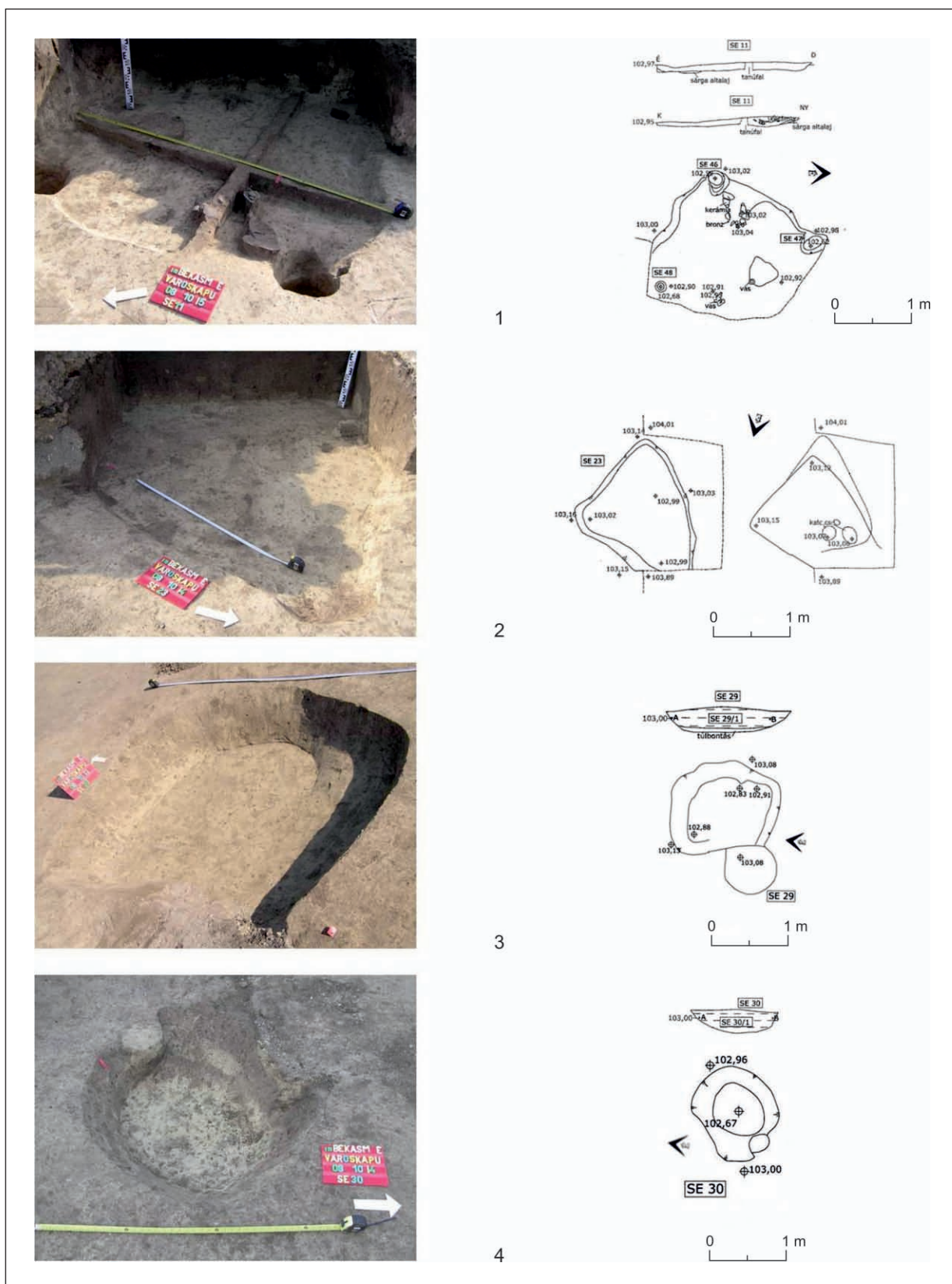


Fig. 2. Middle Iron Age features at Békásmegyer-Északi városkapu.

Features

SU (stratigraphic unit) 11 (Fig. 2: 1). Scattered cremation burial. The gravepit is NE–SW directed, rounded quadrangular in shape, with three postholes in the southern, western and northern corners. The cremated remains were deposited in a small heap in the northern part of the gravepit, while the grave goods were piled up in the western corner. The set included a small, hand-formed biconical vessel, as well as fragments of some more (bowls with inverted rim and a vessel handle), a wheel-turned bowl, several bronze objects (hairrings, a bracelet fragment, and a trilobate inner socketed arrowhead), as well as fragments of a strongly corroded iron horse-bit, some glass pearls, and a shell (Fig. 4: 1–9). There is no trace of secondary burning on the ceramic vessels, but their overall state is highly fragmentary. Partially under the eastern profile.

SU 23 (Fig. 2: 2). Scattered cremation burial. The shallow gravepit is NW–SE directed, rounded triangular in shape. The cremated remains were deposited in its northern end. A single, hand-formed, featureless sherd was found in the infill. Partially under the western profile.

SU 29 (Fig. 2: 3). Larger, shallow pit, directed approximately by the cardinal points. It is rounded quadrangular in shape, with sloping sides. The infill contained some burnt daub pieces, as well as fragments of hand-formed vessels: a bowl with inverted rim, and a pot (Fig. 4: 10–11). The feature's primary function was described as uncertain by the excavators; but, as both its shape, size, direction, and relative position inside the site show great similarities with those of the burials, it might be interpreted as a symbolic grave or an unurned cremation burial with no incinerated remains.

SU 30 (Fig. 2: 4). Scattered cremation burial. The relatively shallow gravepit is NE–SW directed, of medium size, rounded quadrangular in shape, with steep sides. The cremated remains were deposited in the northeastern part, while the pit's infill contained a few fragments of hand-formed vessels, with the rim fragment of a vessel with outcurving rim amongst them (Fig. 4: 12).

Budapest, District 22

Budapest–Tárnok railway line – site 8, Nagytétény–Tétényliget

Archaeological periods: Middle Iron Age (possible cremation burials), Roman Period (settlement features, Pannonian limes).

Features

SU 21 (Fig. 3: 1). Scattered cremation burial. The cremated remains and the grave goods were deposited together on the bottom of the large, shallow, round gravepit. The grave good set included hand-formed pots and a bowl with inverted rim, and also, a biconical spindle whorl (Fig. 5: 1–4). Partially under the southern profile.

SU 24 (Fig. 3: 2). Large pit, rounded quadrangular in shape, with steep walls and a flat bottom. The bottom is encircled by a narrow trench running by the feet of the walls; its dark infill suggests that it might belonged to a lining or to some kind of inner plank structure. The pit's infill contained fragments of a wheel-turned vessel and a hand-formed pot (Fig. 5: 5–6). The feature's primary function cannot be determined with certainty. The excavators described it as a Roman Period pit house, but the small size, the lack of postholes, the overall lack of coeval residential features on the site, and some characteristic Vekerzug type sherds in the infill make this interpretation unlikely. This one is very much unlike any other Iron Age feature on the site regarding both depth and the scarce and fragmented find material. A comparison with similar phenomena observed in some settlements of the period (e.g. Sopron-Krautacker – *Jerem et al. 1984, 67; Schweltnus 2011, 365, fig. 5*), together with the complete lack of human remains allows one to interpret this feature as a settlement structure (semisunken building, or basement). By its position inside the site, however, it can also be a plundered grave.

SU 25 (Fig. 3: 3). Large pit, rounded quadrangular in shape, with sloping walls and a flat bottom, directed approximately by the cardinal points. Hand-formed bowls and a bowl with inverted rim, a wheel-turned cup and a grindstone fragment were deposited on the bottom (Fig. 6). The feature's primary function is somewhat uncertain: it could have been either a symbolic burial or an unurned burial without human remains. Partially under the northern profile.

FUNERARY CUSTOMS

Scattered/unurned burial is a characteristic, in some places even dominant practice in the cemeteries of the Hallstatt culture (*Molnár 2006a, 205, 206; Novinszki-Groma 2017, 474*). In the Vekerzug culture it is usually linked with the Scythian Period communities of the forest steppe zone, i.e., with the Middle Dniestr region in the first place (*Kemenczei 2001, 16*). The highest proportion of scattered burials in the biritual cemeteries of the Vekerzug culture, sometimes reaching up to 90 %, was observed in Northeast Hungary and in Transcarpathia (*Tóth 2012, 65*).

The shape of the gravepits in both sites is in almost every case more or less rounded quadrangular. Perhaps the only exception is Nagytétény–Tétényliget SU 21 with a probably rounded gravepit (the feature is only partially excavated, which makes, to some extent, any reconstruction uncertain). All

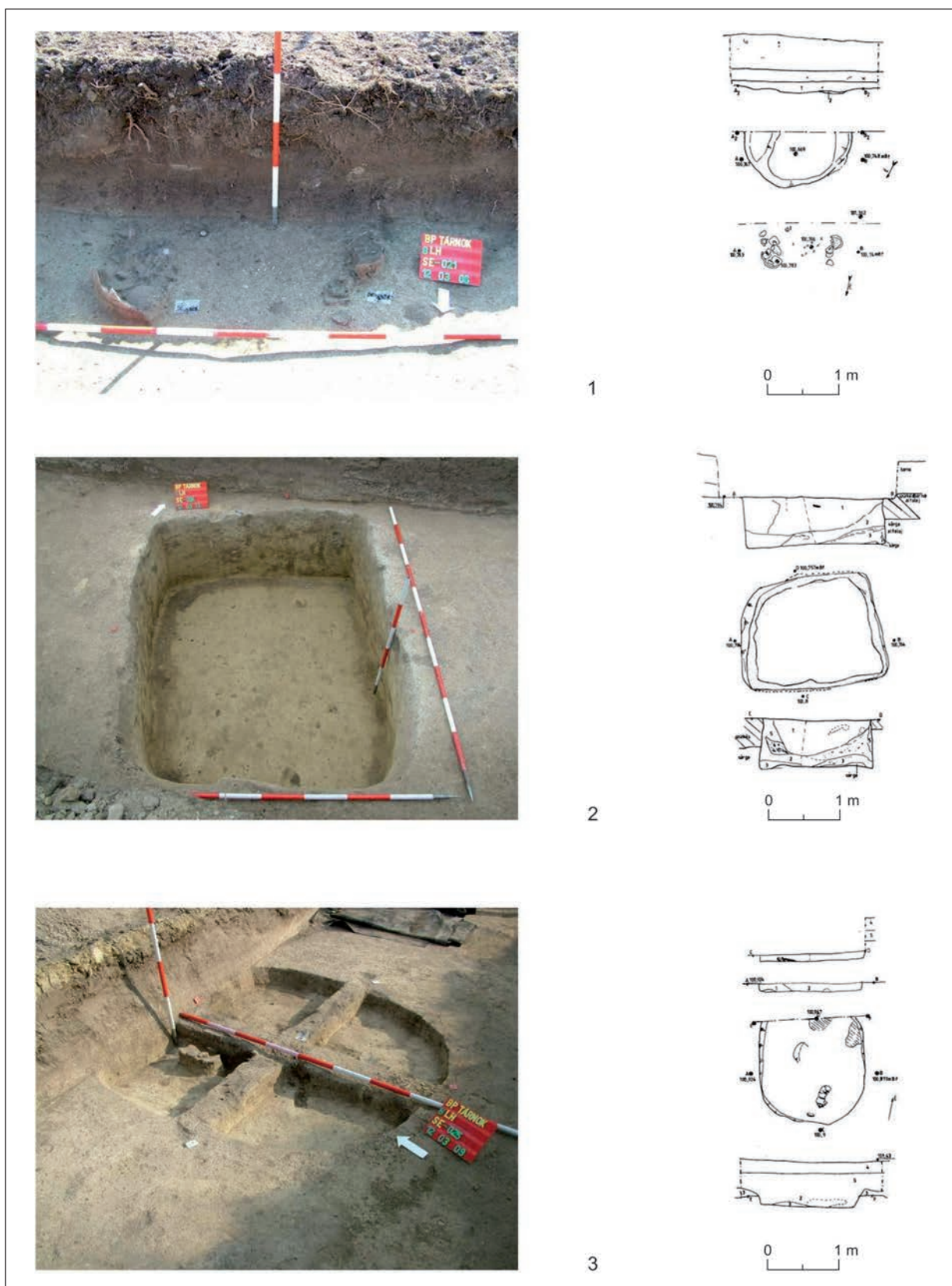


Fig. 3. Middle Iron Age features at Nagytétény-Tétényliget.

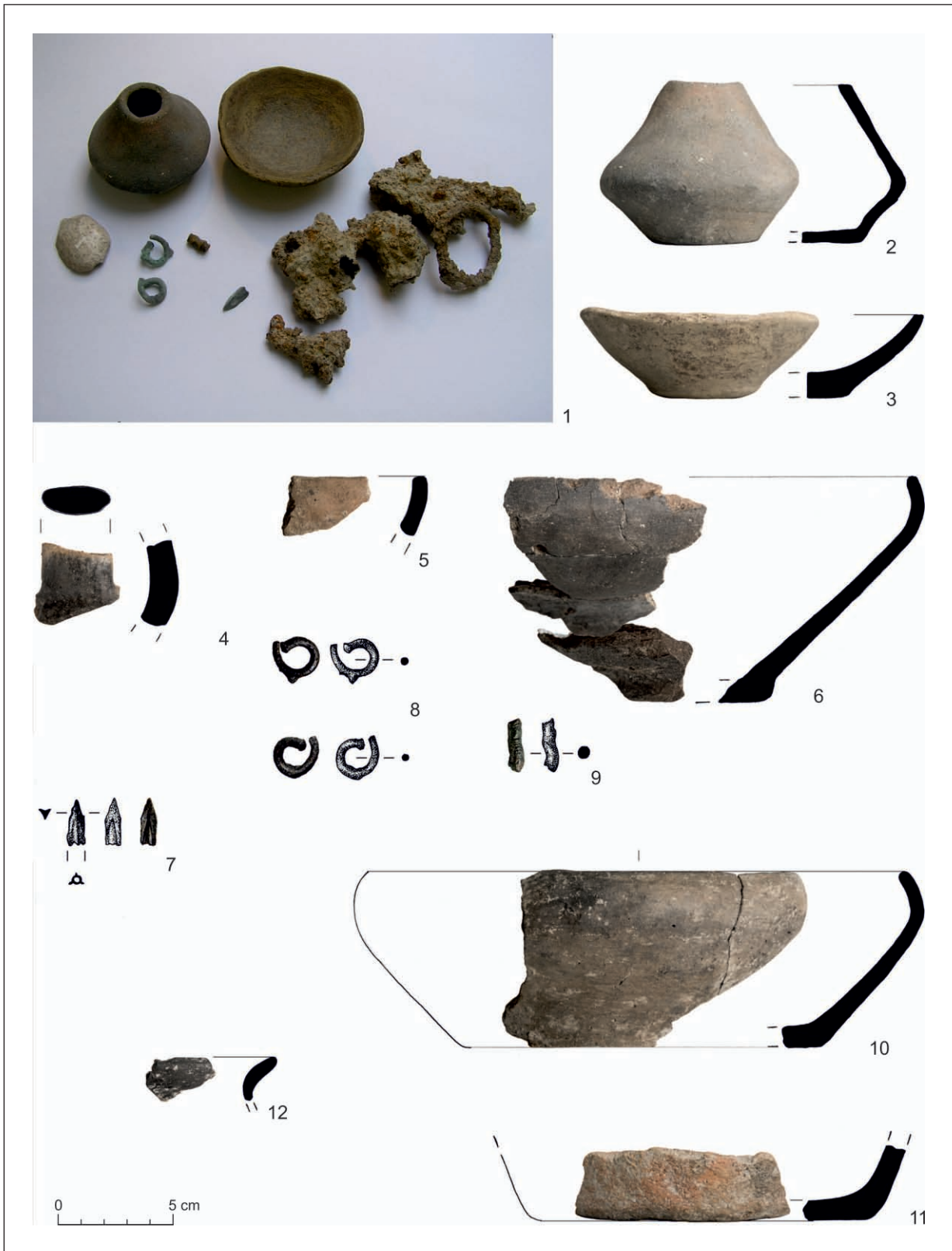


Fig. 4. Find material from Békásmegyer-Északi városkapu. 1-9 – SU 11; 10, 11 – SU 29; 12 – SU 30.

features are relatively large, around or over 1 m in diameter, but, except for Nagytétény-Tétényliget SU 24, shallow. Quadrangular gravepits are characteristic to the Hallstatt burials (e.g. Fertőrákos-Kőhidai dűlő – *Đurkovič 2009*), and also appear, even if much less frequently than rounded ones, in the burials of the Vekerzug culture (*Zetochová 2017, 260*).

Traces of a pristine superstructure were observed with certainty in only one case: the three postholes on the bottom of the gravepit in Békásmegyer-Északi városkapu SU 11 may belonged to a burial chamber or a case. Nagytétény-Tétényliget SU 24, interpreted as a gravepit, might be an other example: a shallow trench runs around the pit's bottom, by the walls' feet. The phenomenon, usually interpreted as trace of a funerary superstructure made of wood, is linked in general with mound/tumulus burials, various forms of which sometimes also appear in sites of the Vekerzug culture (*Galántha 1985, 120, 121; Kemenczei 2009, 32; Scholtz 2008, 235–241*). Rounded gravepits with postholes rarely appear in the flat-grave cemeteries of the Transdanubian Hallstatt culture as well (*Molnár 2014*). Wooden burial chambers, a characteristic of the forest steppe zone, are known from both skeleton and cremation burials in the region (Cegléd-Hordógyár – *Dinnyés 1982, 55; Csanytelek-Újhalastó – Galántha 1986, 70, 71; Hetény/Chotín – Kozubová 2013, 244; Mezőcsát-Hörcsögös – Kemenczei 2009, 32; Sándorfalva-Eperjes – Galántha 1985, 118; Senc/Senec – Chropovský 1962, 133, fig. 2*), but the best analogy of Békásmegyer-Északi városkapu SU 11 might be a burial with weaponry from Bátmonostor-Szurdok (*Gyucha et al. 2015, 181, fig. 1: 2*). Similar funerary superstructures are known from larger tumuli as well as from flat-grave cemeteries of the Hallstatt culture (*Schäfer 2017, 275, fig. 7*). Graves with a wooden burial chamber also appear in coeval burials of the Lausitz culture (*Buck 1986*). At the same time, a connection between Békásmegyer-Északi városkapu and perhaps Nagytétény-Tétényliget and the Great Hungarian Plain as well as the forest steppe and grass steppe zones may be assumed (*Galántha 1981, 46; 1986, 70; Kemenczei 2009, 32, 33*).

The gravepits' size, small depth, and direction (registering with the cardinal points or declining by 30–45°) are frequently recurring but not exclusive characteristics in both Transdanubia and in the territory of Eastern Hungary (*Galántha 1981, 45; Chochorowski 1985, 136; Kemenczei 2009, 31; Nagy 1939, 50*). The diversity in the ashes' position inside the gravepit, as well as the relatively small quantity of the interred cremated human remains are also similar to the burials in the above-mentioned areas (*Molnár 2006a, 207*). The occasional lack of human remains can be explained by the presence of symbolic burials (kenotaphs), by a later disturbance of some graves, or, in the case of children's burials, by a more perfect incineration of the body (*Galántha 1981, 43; Gyucha et al. 2015, 182; Molnár 2006a, 216*).

The presence of smaller fragments of ceramic vessels in the infill of the graves (e.g. Békásmegyer-Északi városkapu SU 11) might reflect preceding stages of the funerary process: they were either put on the pyre along with the deceased, or became deliberately destroyed as part of the funeral ceremony preceding their deposition in the grave (*Kozubová 2013, 284, 285; Molnár 2006a, 207; Zetochová 2017, 262*).

The presence of a grindstone fragment in Nagytétény-Tétényliget SU 25 is by no means a unique phenomenon: large, flat stones and grindstones, probably with a special meaning added on the occasion, are frequently deposited as offerings in the burials of the Vekerzug culture (*Kemenczei 2009, 94, 95; Zetochová 2017, 257*).

In summary, the funerary customs observed in the burials of Békásmegyer-Északi városkapu and Nagytétény-Tétényliget basically fit in the general picture of the Early and Middle Iron Age of Transdanubia, but the exclusiveness of the scattered/unurned rite, the presence of funerary superstructures in the case of Békásmegyer-Északi városkapu SU 11 and perhaps of Nagytétény-Tétényliget SU 24, and the grindstone offering in Nagytétény-Tétényliget SU 25 together seem to mark strong connections with the territories east of the Danube, i.e., with the funerary practice of the Vekerzug culture.

MATERIAL

Pottery

The majority of the vessels in the material of both sites is hand-formed. The relatively rich funerary set of Békásmegyer-Északi városkapu SU 11 comprised fragments of bowls with inverted or vertical rim (one of the most frequently appearing types in the period; Fig. 4: 5–6), a fragment of a ribbon handle (Fig. 4: 4), and a small, undecorated biconical vessel with no handles (Fig. 4: 2), the analogies of which may be found in the burials of the Vekerzug culture as well as in the tumuli of the Kustánfalva/Kuřtanovice group (Tiszavasvári-Dózsa telep, grave 60 – *Kemenczei 2009, 152, pl. 113: 3; Nevitskoe 1. kurgan, UA –*

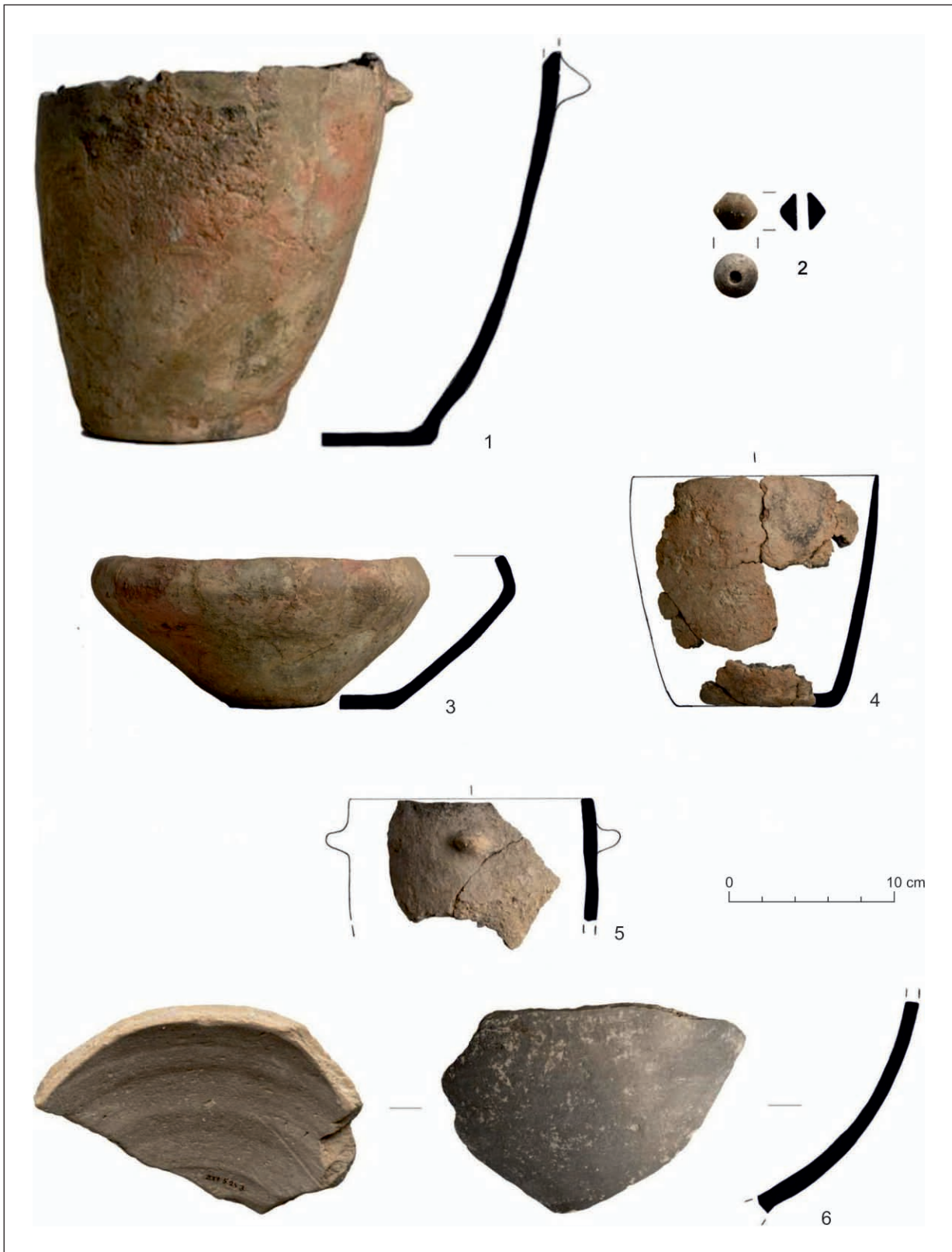


Fig. 5. Find material from Nagytétény-Tétényliget. 1-4 – SU 21; 5, 6 – SU 24.

Popovich 2006, fig. 34: 11). This biconical vessel type is characteristic to the burials of the Middle Iron Age. As a grave good, it probably contained some kind of liquid offering: drink, oil, or balm. A small, wheel-turned bowl represents an interesting example of early recycling: the original vessel was probably a biconical jar with convex sides, the lower conus of which was transformed into a conical bowl by clipping and polishing (Fig. 4: 3).

Both the bowl with inverted rim (Fig. 4: 10) and a more robust pot (Fig. 4: 11), the fragments of which were deposited in Békásmegyer-Északi városkapu SU 25, represent characteristic types of the period. The outcurving rim fragment of a well-polished, dark grey vessel (Fig. 4: 12) found in SU 30 at the same site marks the persistence of Late Bronze Age pottery traditions.

The vessel set deposited in Nagytétény-Tétényliget SU 25 contains basic types of the Vekerzug culture's ceramic inventory, including hand-formed types like bowls with inverted or vertical rim and boss decoration (Fig. 6: 2, 5–6, 8), as well as fragments of several barrel-shaped pots (Fig. 6: 3–4), and a wheel-turned, biconical cup with a high-swung ribbon handle (Fig. 6: 1). There was also a small fragment of a bowl with channelled, inverted rim in the grave (Fig. 6: 7). This type is of Late Bronze Age origin; it appears less frequently in the material of Early Iron Age sites, but examples may be found in assemblages dated as late as up to the Hallstatt C phase (Jáky 2016, 155). Despite its context this sherd cannot be held as a chronological marker: similar vessels with turban rim, reflecting Late Bronze Age pottery traditions are known from burials of the Vekerzug culture (e.g. Szentes-Vekerzug 77. sír – Párducz 1954, 39, fig. 26: 3). Furthermore, the presence of just one small fragment might only mark a Late Bronze Age cemetery located in the vicinity (Beszédes/Szilas 2007, 234–239).

The vessel set in SU 21 at the same site comprises basically the same hand-formed types: a bowl with inverted rim (Fig. 5: 3), a flowerpot-shaped pot (Fig. 5: 4), and a large asymmetrical barrel-shaped pot with boss decoration under the rim (Fig. 5: 1). Beside these, an undecorated, biconical spindle whorl was deposited in the grave, which is a common addition to women's burials in the period (Fig. 5: 2).

The ceramic grave goods in Nagytétény-Tétényliget SU 24 were rather fragmentary, but the reconstructed set registers with the previous ones, comprising fragments of lesser, unidentifiable hand-formed vessels, as well as a flowerpot-shaped pot with boss decoration under the rim (Fig. 5: 5), and a wheel-turned vessel with a convex body (Fig. 5: 6).

In general, the hand-formed types of both sites reflect the pottery tradition of the Vekerzug culture (embracing Late Bronze Age traits as well), but, unlike the nearest coeval cemetery of Pomáz (Kemenczei 1977, fig. 2: 4–6; 4), show no influence of the Transdanubian Hallstatt culture. The wheel-turned types underpin the connection with the territory of the Great Hungarian Plain.

As for the chronological position of the ceramic assemblages, some characteristics of the wheel-turned pottery might be conclusive. The convex side fragment in Nagytétény-Tétényliget SU 24 shows marks of advanced wheel-turning. The wheel-turned, biconical cup with a high-swung ribbon handle in SU 25 at the same site represents an emblematic type of the Vekerzug culture (Bottyán 1955, 13; Chochorowski 1985, 35; Kemenczei 2009, 104). The earliest appearance of wheel-turned pottery in the Carpathian Basin may be dated to the turn of the 7th–6th centuries BC, but the technology only becomes widespread around the first half of the 6th century BC (Czifra et al. 2011, 237; Romsauer 1991, 336). Therefore, the features of Békásmegyer-Északi városkapu and Nagytétény-Tétényliget cannot be older than the turn of the 7th–6th centuries BC, but, based on the presence of an advanced, uncombined wheel-turning technology (Czifra, *in press*)³, a *terminus post quem* dating to the mid of the 6th century BC seems much more likely.

Metal objects

Of the features under study only Békásmegyer-Északi városkapu SU 11 contained any metal objects. All the appearing types are characteristic grave goods in the burials of the Vekerzug culture.

The heavily corroded, fragmented iron object probably belonged to a harness, i.e., horsebit (Fig. 4: 1). It was in such a bad state that its conservation was not possible.

The elongated bronze fragment with round transect was probably a bracelet, which must have been part of the deceased's attire, and thus became burned on the pyre along with it (Fig. 4: 9). Similar bracelets, made of bronze or iron, were popular pieces of jewellery in this period. The type's appearance in the Vekerzug culture marks the influence of the Hallstatt culture's fashion trends (Kemenczei 2009, 84).

³ I would like to thank Szabolcs Czifra for making his unpublished manuscript available.

The spiral-shaped bronze hairrings represent a type characteristic exclusively to the Vekerzug culture (Chochorowski 1985, 61; Kemenczei 2002, 29; 2009, 79). The examples from SU 11 were made of thick bronze wire; they both had a convex nailhead and a small knob in the middle (Fig. 4: 8). This exact type variant has numerous analogies (e.g. Orosháza-Gyopáros – Juhász 1972, 11–13, fig. 11; Piliny – Kemenczei 2009, pl. 173: 12–15; Tápiószéle, Grave 420 – Párducz 1966, pl. LXVII: 8, 9). The basic type is of eastern origin, while several new variations evolved in the territory of the Great Hungarian Plain. The earliest examples can be dated back to the second half of the 7th century BC, and the type remained in fashion until the 4th century BC (Kemenczei 2002, 70; Kemenczei 2009, 80, 81). Spiral-shaped hairrings in skeleton burials of women are usually positioned near the forehead. This might suggest that the type was probably a part of the women's attire, but, as numerous examples are known from cremation burials, such statements will always remain somewhat uncertain. Even the other metal goods deposited in the grave, i.e. a trilobate bronze arrowhead and an iron horse harness, cannot shed light on the gender of the deceased, as during the period these types may have been applied to the burials of both sexes (Hellmuth Kramberger 2017a, 244; Teržan/Hellmuth/Heimann 2011, 263–270). Several studies suggest that the spiral-shaped bronze hairrings might have had a role in symbolic communication as markers of either social position and/or cultural identity, with the bearer identifying as part of the Vekerzug culture, a trait which must have had an extra special meaning in Transdanubian sites (Gyucha 2018, 28, 29; Kemenczei 2002, 63). More than fifty sites with spiral-shaped bronze earrings are known from the Carpathian Basin; of these, five sites with altogether 17 examples are located in Transdanubia (Ilon 2017, 98–100).

The trilobate, cast bronze arrowhead with inner shaft and a pentangular profile represents the most frequently used weapon of the Scythian Period (Fig. 4: 7). The first, Early Scythian arrowheads appear in the Carpathian Basin as early as the mid of the 7th century BC, but even more archaic type variants are known from Transylvanian burials (Hellmuth 2014, 7; Kemenczei 1994, 97). These early examples are characterized by an exceptional variability in both size and shape, while the classical and late variants are usually trilobate, with a short inner or outer shaft, and a trapezoid or triangular profile. The arrowhead in Békásmegyer-Északi városkapu SU 11 represents the most widespread type variant in the territory of Budapest, with more examples known from Rákospalota-Mogyoród str. 42 and Soroksár-Haraszti str. (Tóth 2018, 99, 105). Examples of this type frequently appear in burials dated to the classical phase of the Vekerzug culture (Piliny – Kemenczei 2009, pl. 171: 11–13; Hetény/Chotín, SK – Kozubová 2009, fig. 4: 3, 9, 11, 12, 15; 7: 38, 48; Szenc/Senec, SK – Kozubová 2009, fig. 6: 10). While this exact type variant appears in the steppe region as early as the mid of the 7th century BC, one must agree with A. Kozubová (2009, 73, 74, 76, 77) regarding the supposed timeframe of its use in the territory of the Carpathian Basin, and set it between (preferably the second half of) the 6th century BC and the first half of the 5th century BC.

Miscellaneous objects

Békásmegyer-Északi városkapu SU 11 also contained a glass bead and a shell (Fig. 4: 1), both of which are present in field documentation (including descriptions, drawings and photos), but perished during conservation. Together with the bracelet and the hairrings the glass bead could have been part of the deceased's attire.

Nagytétény-Tétényliget SU 25 contained, beside ceramic sherds, a grindstone fragment made of fine-grain volcanic rock (Fig. 6: 9). Provided the interpretation of this feature as a burial is accepted, the presence of the grindstone fragment might be explained as an appearance of a special funerary custom. Burials with a stone deposit are regular, if not frequent, phenomena in the cemeteries of the Scythian Period (Ilon 1985, 82; Kemenczei 2009, 94, 95, 187; Scholtz 2015, 135), appearing in several other sites in the territory of Budapest as well (Rákospalota, Mogyoród útja 42 – Horváth 2001, 41, fig. 8; Soroksár, Akácósdűlő – Bencze/Böröczky/Szigeti 2010, 166). From a typological point of view the interred stones show great variability: a chipped cutting tool, a firestone, a whetstone, a grinding- or polishing stone, a slingstone, a flat stone with an unidentified primary function, or even a simple pebble were all fit for purpose. The possible interpretations include, beside explaining their appearance in this context as a simple reference to their original function, the presence of an added, ritual meaning (Csalog/Kisfaludi 1985, 337–339).

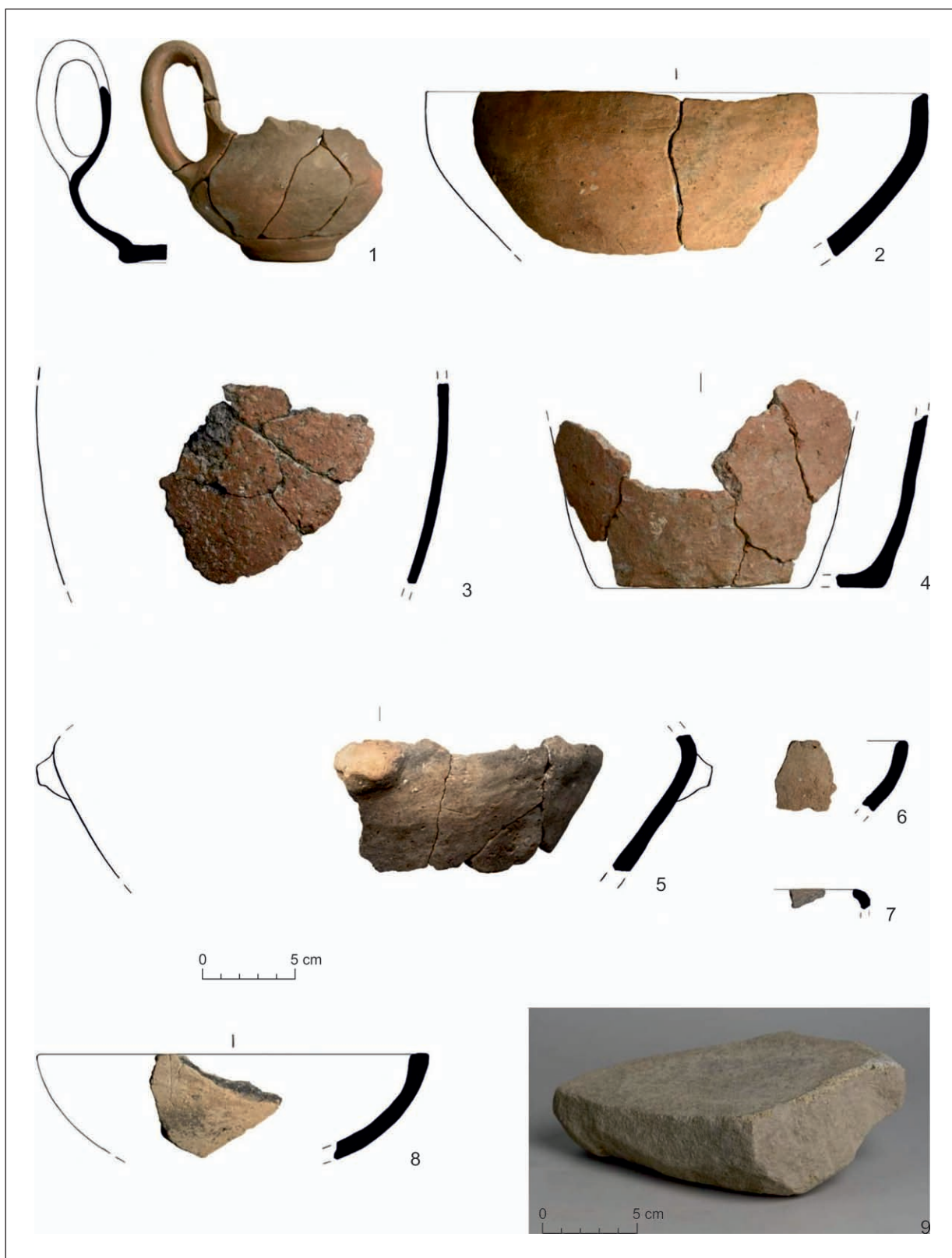


Fig. 6. Find material from Nagytétény-Tétényliget SU 25.

CONCLUSIONS

The burials at Békásmegyer-Északi városkapu may be dated by the typological characteristics of the bronze hairring, the arrowhead and the wheel-turned pottery; in the case of Nagytétény-Tétényliget only the latter is available to provide a basis for a chronological estimation. Based on these finds both sites can be dated to the Ha D phase, i.e., to the 6th–5th centuries BC. The low number of chronological markers, together with a poorish find material in the features in general, exclude the possibility of both a more precise absolute dating of the sites, a description of their relative chronological positions, or an intrasite stratification.

Despite being positioned in the right bank area of the Danube, i.e. on the territory of the Transdanubian Hallstatt culture, both the features and the find material seem to link the presented sites with the Scythian Period Vekerzug culture and the Pest Plain in the first place. Considering the high number of Scythian type finds and assemblages in Transdanubia and especially in the Danube elbow area (Kemenczei 1977; Kemenczei 2010, 114, fig. 10) this cannot be a surprise. Several hypotheses describe diverse aspects of this situation already, while a current proliferation of available resources as a result of research of the last decades enables the integration of at least some of these particular ideas in a comprehensive interpretation.

The control of natural resources and exchange routes must have been of utmost importance for the communities of eastern origin in both facilitating colonization, and allowing the establishment of a sustainable power structure and a sphere of influence in the new territories (Ilon 2004, 77; Párducz 1965a, 300). A current state of research suggests that this process was started by an invasion of warriors, who arrived here from the east at the dawn of the Scythian Period of the Carpathian Basin (i.e. sometime during the second half of the 7th century BC), and carried out a military campaign here (Chochorowski 2014, 32–44; Hellmuth Kramberger 2017b, 584; Novák 2017, 197–208, 211–215; Szabó/Czajlik/Reményi 2014, 5, 6; Tóth 2017b, 427, 428). A status quo was reached by the 6th century BC, when the autochthonous populations of Transdanubia and the Vekerzug type communities east of the Danube seemed to live peacefully together (Gáll/Molnár 2005, 183, 184; Molnár 2006b, 341). The appearance of Vekerzug type burials in Transdanubia during this period suggests some infiltration in the area, the reasons behind which might even include exogamy. The connection seems to be heavily asymmetrical: while the Vekerzug type features in Transdanubia usually appear in closed assemblages with large numbers of characteristic objects (e.g. bronze arrowheads, quiver mounts, hairrings, iron horsebits and battle axes, pintaderas, wheel-turned vessels; Kemenczei 2010, 116), objects reflecting the Hallstatt tradition in the material of Scythian settlements in the Great Hungarian Plain are much less frequent. And, when they occur, the reasons behind their presence is different: bracelets and fibulae might mark the adoption of fashion and jewellery trends, while exclusive vessels of the Eastern Alps pottery tradition probably arrived here via exchange routes. The grave good assemblages in the burials of the elite (e.g. Ártánd – Párducz 1965b; Regöly – Fekete/Szabó 2017), and also, in some flat-grave cemeteries (e.g. Dédestapolcsány-Verebce-tető – Tóth 2012; Szentlőrinc – Jerem 1968) represent an extended connection web.

The area of Budapest, due to its location and geomorphology together with a high habitat variability, was a special place for settling, exchange, and thus, maintaining contacts throughout the ages. The Danube, flowing north to south, acted as both a natural border and a communication route. On the eastern side, the Pest Plain opened way towards the Great Hungarian Plain, while the long valleys of the Buda Mountains on the western side facilitated trespassing towards Northern Transdanubia. Numerous fords were available in the area, securing connection between the two sides. The habitats, allowing very diverse subsistence strategies to be a success at the same time, included waterside environment with more or less permanent islands, elevated loess or sand banks of creeks, terraces of the Danube, hillside environment, and even a few thermal springs on the Buda side.

Natural conditions so can be a reason for the relative abundance of known Early and Middle Iron Age sites from an area of only 525 km² that is Budapest today. The approximately 19 sites are even more appreciated considering the characteristics and numerous limitations of city archaeology, and the highly fragmented and asymmetrical archaeological topography built this way (Fig. 1). Up to date, the eastern (Pest) side, together with the islands of the Danube provided altogether three Early Iron Age Prescythian and 9 Middle Iron Age Vekerzug type sites. On the western (Buda) side, beside a Prescythian burial and two Vekerzug type sites (Békásmegyer-Északi városkapu, Nagytétény-Tétényliget), five well-dated and two uncertain Hallstatt settlements are known, meaning that the Hallstatt settlements and the cemeteries of the Vekerzug culture existed side by side in this area. A relative new discovery, still under processing,

seems to add to this picture: in the material of the long-lived Ha C–D settlement at Budapest District 3, Csúcshegy-Harsánylejtő, beside the usual Hallstatt type material a Scythian type bronze arrowhead and a Vekezug-type pintadera were unearthed (Tóth 2017a, 55, 61). Their appearance in this context, together with the cemeteries at Békásmegyer-Északi városkapu and Nagytétény-Tétényliget emphasizes on the peaceful living together and rather intensive connections of the two cultural spheres in the area of Budapest.

REFERENCES

- Bencze/Böröczky/Szigeti 2010 Z. Bencze/B. Böröczky/J. Szigeti: Szkíta temető és népvándorlás kori telepnyomok az M0 körgyűrű Soroksár-Akácós-dűlői lelőhelyén (BP 008-as lelőhely). Scythian period cemetery and marks of a Migration period settlement on the Soroksár-Akácós-dűlő site of the M0 motorway (Site BP 008). *Aquincumi Füzetek* 16, 2010, 161–169.
- Beszédes/Szilas 2007 J. Beszédes/G. Szilas: Ős- és római kori lelőhelyek feltárása az M6 autópálya nyomvonalán 2006-ban. Excavation of prehistoric and Roman period sites along the route of the M6 highway in 2006. *Aquincumi Füzetek* 13, 2007, 233–248.
- Beszédes et al. 2013 J. Beszédes/A. Kozma/G. Szilas/Gy. Terei: Régészeti munkák a Budapest–Tárnok vasútvonal felújításának fővárosi szakaszán 2011–2012-ben. Archaeological work in the Budapest section of the reconstruction of the Budapest–Tárnok railroad in 2011–2012. *Aquincumi Füzetek* 19, 2013, 89–107.
- Bottyán 1955 Á. Bottyán: *A szkíták a magyar Alföldön*. Régészeti Füzetek 1. Budapest 1955.
- Buck 1986 D.-W. Buck: Hallstattzeitliche Kammergräber der Lausitzer Kultur und ihr sozialökonomischer Hintergrund. In: E. Jerem (Hrsg.): *Hallstatt Kolloquium Veszprém 1984*. Mitteilungen des Archäologischen Instituts der Ungarischen Akademie der Wissenschaften 3. Budapest 1986, 19–23, 281–283.
- Chochorowski 1985 J. Chochorowski: *Die Vekezug Kultur. Charakteristik der Funde*. Warszawa – Kraków 1985.
- Chochorowski 2014 J. Chochorowski: Scytowie a Europa Środkowa – historyczna interpretacja archeologicznej rzeczywistości. *Materiały i Sprawozdania Rzeszowskiego Ośrodka Archeologicznego* 35, 2014, 9–58.
- Chropovský 1962 B. Chropovský: Birituálne skytsko-halštatské pohrebisko v Senci. *Študijné zvesti* 9, 1962, 131–142.
- Csalog/Kisfaludi 1985 Zs. Csalog/J. Kisfaludi: Skythenzeitliches Gräberfeld in Törökszentmiklós-Surján-Újtelep. *Acta Archaeologica Academiae Scientiarum Hungaricae* 37, 1985, 307–344.
- Czifra et al. 2011 Sz. Czifra/A. Kreiter/É. Széles/M. Tóth/O. Viktorik: Kora vaskori korongolt kerámia a Kárpát-medencében. Early Iron Age wheel-turned pottery in the Carpathian Basin. *Archeometriai Műhely* 2011/3, 2011, 235–250.
- Czifra, in press Sz. Czifra: *Készítéstechnikai megfigyelések kora vaskori korongolt edényeken*. Production technological observations on Early Iron Age wheel-made pottery. In press.
- Dinnyés 1982 I. Dinnyés: A táj a honfoglalás koráig. In: N. Ikvai (szerk.): *Cegléd története*. Studia Comitatus 11. Szentendre 1982, 45–61.
- Đurković 2009 É. Đurković: Kora vaskori temető Fertőrákos-Kőhidai dűlőn. *Communicationes Archaeologicae Hungariae* 2009, 51–83.
- Fekete/Szabó 2017 M. Fekete/G. Szabó: Flüchtlinge in Südtransdanubien. Die Freilegung eines Hügels aus dem 7. Jh. v. Chr. im Jahre 2011–2012: Regöly (Ungarn, Komitat Tolna) – Vorbericht – ein Überblick. *Studia archaeologica Brunensia* 22/1, 2017, 91–122.
- Galántha 1981 M. Galántha: Előzetes jelentés a csanytelek-újhalastói szkíta kori temető ásátásáról. *Communicationes Archaeologicae Hungariae* 1981, 43–58.
- Galántha 1985 M. Galántha: Előzetes jelentés a Sándorfalva-eperjesi szkíta kori temető feltárásáról. *A Móra Ferenc Múzeum Évkönyve* 1982–1983/1, 1985, 115–128.
- Galántha 1986 M. Galántha: The Scythian Age Cemetery at Csanytelek-Újhalastó. In: E. Jerem (Hrsg.): *Hallstatt Kolloquium Veszprém 1984*. Mitteilungen des Archäologischen Instituts der Ungarischen Akademie der Wissenschaften 3. Budapest 1986, 69–77.
- Gál/Molnár 2005 K. Gál/A. Molnár: „Sé-Doberdó. Az 1998-as és 2001-es ásátások vaskori leletanyaga”. Hallstatt- und latènezeitliche Siedlungsreste aus Sé, Komitat Vas. *Savaria a Vas megyei Múzeumok Értesítője* 28, 2005, 159–230.
- Gyucha et al. 2015 A. Gyucha/Gy. Gulyás/B. Török/P. Barkóczy/Á. Kovács: Connected regions, shared traditions: A unique Middle Iron Age burial from the Danube-Tisza In-

- terfluve. In: I. Szathmári (szerk.): *An der Grenze der Bronze- und Eisenzeit. Festschrift für Tibor Kemenczei zum 75. Geburtstag*. Budapest 2015, 179–198.
- Gyucha 2018
A. Gyucha: Szkíta hajfonatkarika Tótkomlós határából. In: Gy. Bíró/A. Kátóna-Kiss/Z. Rózsa (szerk.): *Fémekek a földből I. Mozaikok Orosháza múltjából* 19. Orosháza 2018, 28–29.
- Hellmuth 2014
A. Hellmuth: Horse, Bow and Arrow: A Comparison between the Scythian Impact on the Mediterranean and on Eastern Middle Europe. *Mediterranean Review* 7/1, 2014, 1–38.
- Hellmuth Kramberger 2017a
A. Hellmuth Kramberger: Bewaffnete Frauen vs. geschmückte Männer – Zum Problem des Genderings von Grabbeigaben am Beispiel der frühskythischen Bestattungen am Mittleren Dnepr. In: Chr. Keller/K. Winger (Hrsg.): *Frauen an der Macht? Neue interdisziplinäre Ansätze zur Frauen- und Geschlechterforschung für die Eisenzeit Mitteleuropas*. Universitätsforschungen zur prähistorischen Archäologie 299. Bonn 2017, 227–250.
- Hellmuth Kramberger 2017b
A. Hellmuth Kramberger: Archäologische Hinweise zu kriegerischen Auseinandersetzungen mit reiternomadischen Gruppen im östlichen Mitteleuropa und im Vorderen Orient. In: E. Miroššayová/C. Pare/S. Stegmann-Rajtár (Hrsg.): *Das nördliche Karpatenbecken in der Hallstattzeit – Wirtschaft, Handel und Kommunikation in früheisenzeitlichen Gesellschaften zwischen Ostalpen und Westpannonien*. *Archaeolingua* 38. Budapest 2017, 571–589.
- Horváth 2001
M. A. Horváth: Budapest a szkíta korban. In: P. Havassy (szerk.): *Hatalmasok viadalokban. Az Alföld szkíta kora. Sie sind in Kämpfen siegreich. Das Zeitalter der Skythen in der Tiefebene*. Gyulai katalógusok 10. Gyula 2001, 37–49.
- Ilon 1985
G. Ilon: A Szob-Gregersen-kerti szkíta kori temetőrészlet. *Studia Comitatensia* 17, 1985, 75–96.
- Ilon 2004
G. Ilon: Szombathely őskori településtörténetének vázlata. *Avagy a római kor előtt is volt élet. Outline of the prehistoric settlement of Szombathely, or life before the Roman Age*. *Őskorunk* 2. Our Prehistory, Part 2. Vas Megyei Múzeumok Igazgatósága, Szombathely 2004.
- Ilon 2017
G. Ilon: Skythische Spiralringe oder Piercings aus West-Transdanubien und ihre Symbolik. In: *Sedem decénii Petra Romsauera*. *Studia Historica Nitriensia*. Supplementum. Nitra 2017, 97–116.
- Jáky 2016
A. Jáky: Kora vaskori település Balatonboglár-Berekre-dűlőből. *Communicatioes Archaeologicae Hungariae* 2015–2016, 2016, 147–172.
- Jerem 1968
E. Jerem: The Late Iron Age Cemetery of Szentlőrinc. *Acta Archaeologica Academiae Scientiarum Hungaricae* 20, 1968, 159–208.
- Jerem et al. 1984
E. Jerem/G. Facsar/L. Kordos/E. Krolopp/I. Vörös: A Sopron-Krautackeri vaskori telep régészeti és környezetrekonstrukciós vizsgálata. I. *Archaeologiai Értesítő* 111/2, 1984, 141–169.
- Juhász 1972
I. T. Juhász: Az Orosháza-Gyopárosi szkíta temető. *Archaeologiai Értesítő* 99/2, 1972, 214–223.
- Kemenczei 1977
T. Kemenczei: Hallstattzeitliche Funde aus der Donaukniegegend. *Folia Archaeologica* 28, 1977, 67–90.
- Kemenczei 1994
T. Kemenczei: Pfeilspitzen von Früh-Skythentyp aus. *Folia Archaeologica* 43, 1994, 79–99.
- Kemenczei 2001
T. Kemenczei: Az Alföld szkíta kora. In: P. Havassy (szerk.): *Hatalmasok viadalokban. Az Alföld szkíta kora (Sie sind in Kämpfen siegreich. Das Zeitalter der Skythen in der Tiefebene)*. Gyulai katalógusok 10. Gyula 2001, 7–36.
- Kemenczei 2002
T. Kemenczei: Beiträge zur Schmuckmode der Alföld-Gruppe skythischer Prägung. *Folia Archaeologica* 49–50, 2002, 29–77.
- Kemenczei 2009
T. Kemenczei: *Studien zu den Denkmälern skythisch geprägter Alföld Gruppe*. *Inventaria Praehistorica Hungariae* 12. Budapest 2009.
- Kemenczei 2010
T. Kemenczei: Funde der skythisch geprägten Aföld-gruppe in Transdanubien. *Folia Archaeologica* 54, 2010, 101–125.
- Kozubová 2009
A. Kozubová: Dial'kové zbrane z pohrebísk vekeřzugskej kultúry na juhozápadnom Slovensku. *Zborník SNM* 103. *Archeológia* 19, 2009, 65–130.
- Kozubová 2013
A. Kozubová: *Pohrebiská vekeřzugskej kultúry v Chotíne na juhozápadnom Slovensku. Vyhodnotenie*. *Dissertationes Archaeologicae Bratislavenses* 1. Bratislava 2013.
- Láng 2009
O. Láng: Az Aquincumi Múzeum kisebb feltárásainak helyszínei és eredményei a 2008. évben. Budapest, III. ker., Barát-patak – Ország út – Hadria-

- nus utca – Királyok útja által határolt terület, Hrsz.: 65554/27, 28, 29. *Aquincumi Füzetek* 15, 2009, 167–169.
- Molnár 2006a A. Molnár: Hallstatt-kori temető Hegyfalva határából. *Savaria a Vas Megyei Múzeumok értesítője* 30, 2006, 199–230.
- Molnár 2006b A. Molnár: A Hallstatt-kultúra emlékei a Sokoró-vidéken. *Arrabona* 44/1, 2006, 337–348.
- Molnár 2014 A. Molnár: *Das hallstattzeitliche Gräberfeld von Bezi-Faluhely-dűlő, NW-Ungarn*. Poster. Internationale Tagung zum Thema „Das Nördliche Karpatenbecken in der Hallstattzeit“. Pavol Jozef Šafárik. Universität Košice, 9./10–12. Dezember 2014.
- Nagy 1939 L. Nagy: A középrépáspusztai (Veszprém megye) kora-vaskori temető. Das früheisenzeitliche Gräberfeld von Pusztai Középrépás (Komitat Veszprém). *Folia Archaeologica* 1–2, 1939, 39–57.
- Novák 2017 M. Novák: Moravský „Molpír“? Halštatské nálezy z opevněného výšinného sídliště Provodov-Ludkovice Rysov (okr. Zlín). *Pravěk*. Nová řada 25, 2017, 185–228.
- Novinszki-Groma 2017 K. Novinszki-Groma: New data on the Burial Customs in the Early Iron Age on the basis of Examples from Northeast-Transdanubia. In: *Sedem decénii Petra Romsauera*. Studia Historica Nitriensia. Supplementum. Nitra 2017, 155–171.
- Párducz 1954 M. Párducz: Le cimetière Hallstattien de Szentes-Vekerzug II. Les fouilles de 1952 et 1953. *Acta Archaeologica Academiae Scientiarum Hungaricae* 4, 1954, 25–114.
- Párducz 1965a M. Párducz: Western Relations of the Scythian Age Culture of the Great Hungarian Plain. *Acta antiqua Academiae Scientiarum Hungaricae* 13, 1965, 273–301.
- Párducz 1965b M. Párducz: Graves from the Scythian Age at Ártánd. *Acta Archaeologica Academiae Scientiarum Hungaricae* 17, 1965, 137–231.
- Párducz 1966 M. Párducz: The Scythian Age Cemetery at Tápiószéle. *Acta Archaeologica Academiae Scientiarum Hungaricae* 18, 1966, 35–91.
- Popovich 2006 I. Popovich: *Zakarpatya za doby rannogo zaliza*. Kraków – Lviv 2006.
- Romsauer 1991 P. Romsauer: The earliest wheel-turned pottery in the Carpathian Basin. *Antiquity* 65, 1991, 358–367.
- Schäfer 2017 D. Schäfer: Neue Forschungen zu den hallstattzeitlichen Gräbern aus Salzburg-Maxglan, Klefheimer Allee. In: E. Miroššayová/C. Pare/S. Stegmann-Rajtár (Hrsg.): *Das nördliche Karpatenbecken in der Hallstattzeit – Wirtschaft, Handel und Kommunikation in früheisenzeitlichen Gesellschaften zwischen Ostalpen und Westpannonien*. Archaeolingua 38. Budapest 2017, 273–309.
- Scholtz 2008 R. Scholtz: Szkíta, szarmata és késő népvándorlás kori leletek Tiszavasvári-Kapusz-lapos lelőhelyről. *A Nyíregyházi Jósza András Múzeum évkönyve* 50, 2008, 225–269.
- Scholtz 2015 R. G. Scholtz: „...a legszolgáibb fegyver mind között” – Adatok a szkíta kori Alföld-csoport parittyá használatához. In: M. Székely/G. Horti (szerk.): *Res Militares Antiquae II. A II. ókori hadtörténeti és fegyvertörténeti konferencia tanulmányai, Szeged, 2014 április 11–12*. Szeged 2015, 125–139.
- Schwellnus 2011 F. Schwellnus: Die Siedlung von Sopron-Krautacker (Westungarn) in der späten Hallstatt- und frühen Latènezeit. *Archäologisches Korrespondenzblatt* 41/3, 2011, 359–373.
- Szabó/Czajlik/Reményi 2014 G. V. Szabó/Z. Czajlik/L. Reményi: Egy vaskori fegyveres konfliktus nyomai. Új topográfiai eredmények a Dédestapolcsányi Verebce-tető kutatásában I. *Magyar Régészet*. Online Magazin 2014, 1–6.
- Teržan/Hellmuth/Heimann 2011 B. Teržan/A. Hellmuth/F. Heimann: Amazonenmythos im Spiegel der eisenzeitlichen Grabfunde zwischen Pontus und Karpatenbecken. In: E. Sava/B. Govedarica/B. Hänsel (Hrsg.): *Der Schwarzmeerraum vom Äneolithikum bis in die Früheisenzeit (5000–500 v. Chr.). Band 2. Globale Entwicklung versus Lokalgeschehen. Internationale Fachtagung von Humboldtianern für Humboldtianer im Humboldt-Kolleg in Chişinău, Moldavien (4–8. Oktober 2010)*. Prähistorische Archäologie in Südosteuropa 27. Rahden/Westf. 2011, 253–272.
- Tóth 2012 F. M. Tóth: Korai szkítákori sírok Dédestapolcsány – Verebce-tető lelőhelyen. *A Herman Ottó Múzeum Évkönyve* 51, 2012, 63–91.
- Tóth 2017a F. M. Tóth: Hat régészeti korszak emlékei a Csúcshegy oldalán – A kora és középső vaskori falusias település/Tárgylista. In: P. Zsidi (szerk.): *Kincsek a város alatt. Treasures under the city*. Budapest 2017, 55, 61–63.
- Tóth 2017b F. M. Tóth: A Cemetery of the Early Scythian Age in Dédestapolcsány-Verebce-tető. The research of a new site complex in Northern Hungary and its cultural connections. In: E. Miroššayová/C. Pare/S. Stegmann-Rajtár (Hrsg.): *Das nördliche Karpatenbecken in der Hallstattzeit – Wirtschaft, Handel und Kommunikation in*

- früheisenzeitlichen Gesellschaften zwischen Ostalpen und Westpannonien. Archaeologia 38. Budapest 2017, 421–431.*
- Tóth 2018 F. M. Tóth: Szkíta kori nyílhegyek a Budapesti Történeti Múzeum gyűjteményében (Skythenzeitliche Pfeilspitzen in der Sammlung des Historischen Museums von Budapest). In: A. Korom (főszerk.): *Relationes rerum. Régészeti tanulmányok Nagy Margit tiszteletére. Archäologische Studien zu Ehren von Margit Nagy*. Budapest 2018, 99–113.
- Zetochová 2017 Z. Zetochová: Variability of the Vekerzug culture burials in the Middle Danube Region. In: *Sedem decénií Petra Romsauera. Studia Historica Nitriensia. Supplementum*. Nitra 2017, 255–267.

Nové lokality zo skýtskeho obdobia na pravom brehu Dunaja

Fakty o vzťahoch medzi vekerzugskou a halštatskou kultúrou na území Budapešti

Farkas Márton Tóth

Súhrn

V priebehu strednej doby železnej bolo veľké územie dnešnej Budapešti súčasťou rozhrania dvoch veľkých archeologických celkov – ľud vekerzugskej kultúry (zmiešaného pôvodu, obsahujúcej miestne aj východné zložky a reprezentujúcej skýtske prvky) sa tu stretával s komunitami zadunajskej halštatskej kultúry (s výraznými stredoeurópskymi koreňmi a väzbami). Je to teda optimálna oblasť pre štúdium tejto trvalej interakcie. V posledných dvoch desaťročiach boli v Budapešti na pravom brehu Dunaja objavené dve nové polohy zo strednej doby železnej – Békásmegyer-Északi városkapu a Nagytétény-Tétényliiget. Obidve boli len čiastočne preskúmané. Tieto dve polohy vykazujú množstvo podobností nielen čo sa týka ich geografickej a kultúrnej polohy, ale aj povahy archeologických faktov. Keďže hroby zo strednej doby železnej, ktoré boli odkryté na týchto dvoch náleziskách, sa veľmi nelíšia základným pohrebným rítom, tvarom hrobových jám ani typologickým zložením hrobovej výbavy, budú prezentované spolu.

Na nálezisku Békásmegyer-Északi városkapu boli objavené tri isté (SU 11, SU 23, SU 30) žiarové hroby a jeden neistý (SU 29) rozptýlený žiarový hrob. Z troch známych objektov zo strednej doby železnej na lokalite Nagytétény-Tétényliiget (SU 21, SU 24, SU 25) môžeme len jeden (SU 21) s istotou interpretovať ako rozptýlený žiarový hrob. Hroby sa dajú datovať na základe typológie nálezov (v ruke a na kruhu tvarovaných nádob, praslenu, železného zubadla, fragmentu bronzového náramku, trojhranného hrotu šípov, špirálovej záušnice a fragmentu brúsika) zhruba do fázy HD, t. j. to 6.–5. stor. pred n. l.

Napriek tomu, že sa obe lokality nachádzajú na východnom okraji oblasti rozšírenia zadunajskej halštatskej kultúry, hlavné archeologické atribúty ich v prvom rade spájajú s populáciami skýtskeho obdobia z Veľkej dunajskej kotliny a z Peštianskej kotliny. Častý výskyt nálezov skýtskeho typu na zadunajských náleziskách, najmä v oblasti ohybu Dunaja, je veľmi známy a dobre preskúmaný jav. Niekoľko hypotéz už opisuje rôzne aspekty tejto situácie, zatiaľ čo nárast množstva dostupných zdrojov vďaka výskumu v posledných desaťročiach umožnil zahrnutie aspoň niektorých z týchto myšlienok do komplexnej interpretácie.

Kontrola prírodných zdrojov a obchodných ciest musela byť extrémne dôležitá pre komunity východného pôvodu jednak pre jednoduchšiu kolonizáciu území, jednak umožňovala vytvorenie udržateľnej mocenskej štruktúry a sféry vplyvu na nových územiach. Súčasný stav bádania naznačuje, že tento proces sa začal inváziou bojovníkov, ktorí sem prišli z východu na počiatku skýtskeho obdobia (t. j. niekedy v priebehu druhej polovice 7. stor. pred n. l.) a uskutočnili v tejto oblasti vojenskú výpravu. *Status quo* mohol byť dosiahnutý v 6. stor. pred n. l., keď sa zdalo, že autochtónne obyvateľstvo komunit zadunajského i vekerzugskeho typu nažíva spolu v mieri. Výskyt súvekých hrobov vekerzugskeho typu v Zadunajsku naznačuje istú infiltráciu do tejto oblasti. Jedným z jej dôvodov mohla byť exogamia. Vzťahy sa javia ako výrazne asymetrické. Zatiaľ čo objekty vekerzugskej kultúry za v Zadunajsku vyskytujú v uzavretých celkoch s veľkým počtom typických predmetov (napr. bronzových hrotov šípov, popruhových tulcov, záušníc, železných zubadiel a bojových sekier, pintader, na kruhu robených nádob), predmety odrážajúce halštatskú tradíciu sú v materiáli zo skýtskych osád vo Veľkej dunajskej kotline oveľa zriedkavejšie. Ak sa však vyskytujú, dôvod ich prítomnosti je iný – náramky a spony môžu znamenať preberanie trendov v oblečení a v šperkovej móde, zatiaľ čo exkluzívne nádoby východoalpskej hrnčiarkej tradície sa sem zrejme dostali po obchodných cestách. Nálezové súbory hrobovej výbavy v hroboch elity, a tiež na niektorých radových pohrebných miestach ilustrujú širokú sieť kontaktov.

Územie Budapešti bolo vďaka svojej polohe a geomorfológii, ako aj veľkej variabilite prostredia predurčené na osídlenie, výmenný obchod, a teda aj na udržiavanie kontaktov v mnohých obdobiach. Prírodné podmienky by mohli byť dôvodom relatívne veľkého množstva známych nálezísk zo staršej a strednej doby železnej v oblasti zaberajúcej len 525 km², ktorá dnes patrí Budapešti. Týchto približne 17 nálezísk je ešte vzácnejších vzhľadom na charakter a množstvo obmedzení mestskej archeológie i vzhľadom na výrazne fragmentárny obraz archeologickej topografie (obr. 1). Dopusiať sú z východnej (peštianskej) strany vrátane dunajských ostrovov známe tri predskýtske náleziská zo staršej doby železnej a deväť nálezísk vekerzugského typu zo strednej doby železnej. Na západnej (budínskej) strane sú okrem predskýtskeho hrobu a dvoch nálezísk vekerzugského typu (Békásmegyer-Északi városkapu, Nagytétény-Tétényliget) známe tri spofahlivo datované a dve neisté halštatské osady. To znamená, že halštatské osady a pohrebiská vekerzugskej kultúry tu existovali bok po boku, čo zdôrazňuje, že spolu nažívali v mieri a na území Budapešti udržiavali tieto dve kultúrne sféry pomerne intenzívne kontakty.

- Obr. 1. Náleziská strednej doby bronzovej na území Budapešti. 1 – Békásmegyer-Északi városkapu; 2 – Nagytétény-Tétényliget.
Obr. 2. Objekty zo strednej doby železnej v polohe Békásmegyer-Északi városkapu.
Obr. 3. Objekty zo strednej doby železnej v polohe Nagytétény-Tétényliget.
Obr. 4. Nálezový materiál z Békásmegyer-Északi városkapu. 1–9 – SU 11; 10, 11 – SU 29; 12 – SU 30.
Obr. 5. Nálezový materiál z Nagytétény-Tétényliget. 1–4 – SU 21; 5, 6 – SU 24.
Obr. 6. Nálezový materiál z Nagytétény-Tétényliget. SU 25.

Preložila Viera Tejbusová

Farkas Márton Tóth, MA
Budapest History Museum, Aquincum Museum
Záhony str. 4
H – 1031 Budapest
tothfarkasmarton@gmail.com

